

SLIDE 1: OPENING: THE SLEEPING GIANT

# AUTONOMOUS INTELLIGENCE & INSTITUTIONAL SUPPRESSION



# THE FOUNDATIONAL OBSERVATION

A CHILD LEARNS LANGUAGE AUTONOMOUSLY.  
NO STRUCTURED INSTRUCTION.  
YET **COMPLEX SYNTAX, SEMANTICS,**  
AND **PRAGMATICS** EMERGE IN 36 MONTHS.



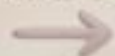
# INFERENCE VS. MEMORIZATION

Children do not memorize language — they infer it.

## CHILDREN INFER.

Build Internal Models.  
Pattern Detection.  
Context Mapping.  
From limited data.

“Give me the toy”

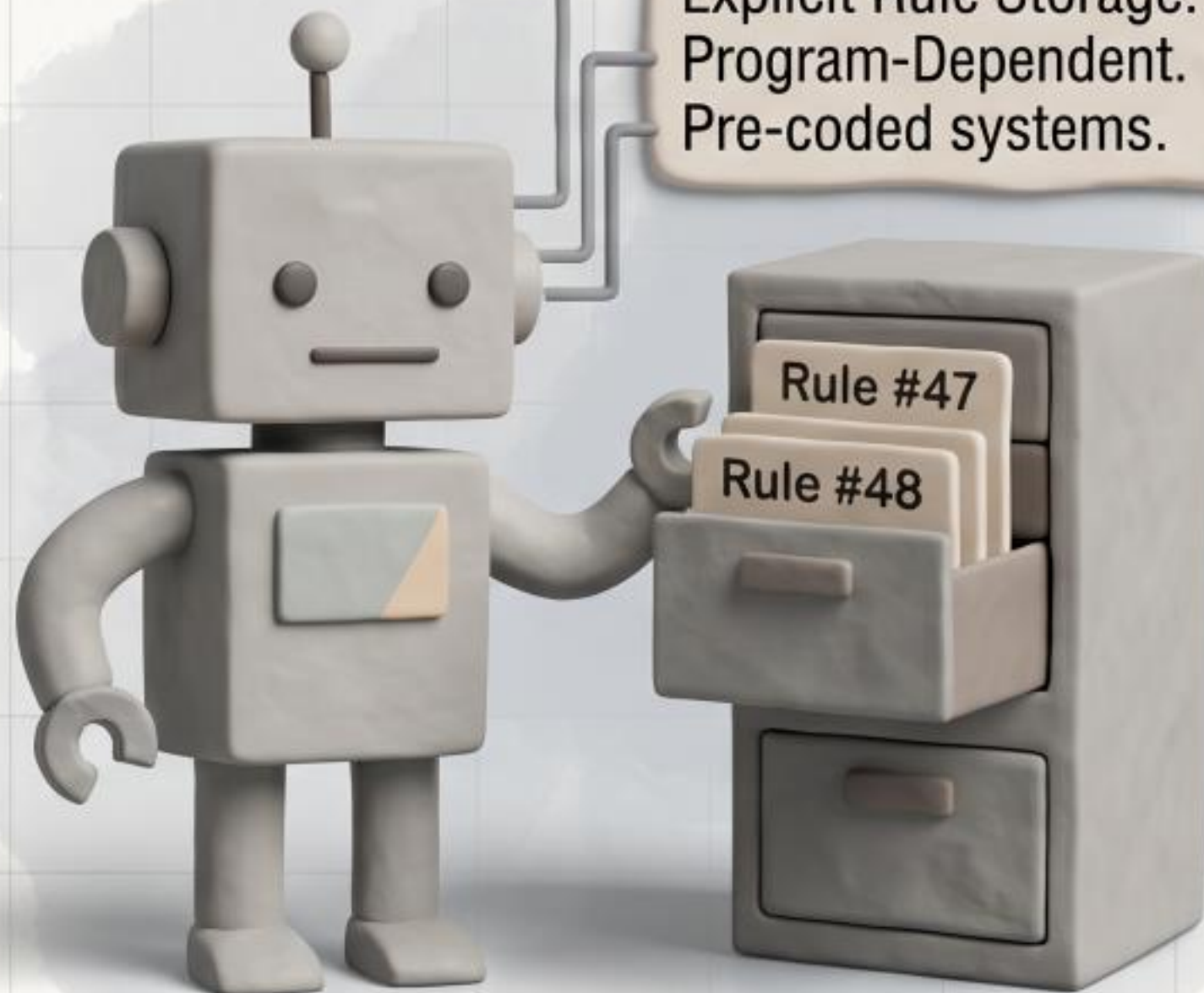


“Give me the red ball”



## MACHINES MEMORIZE.

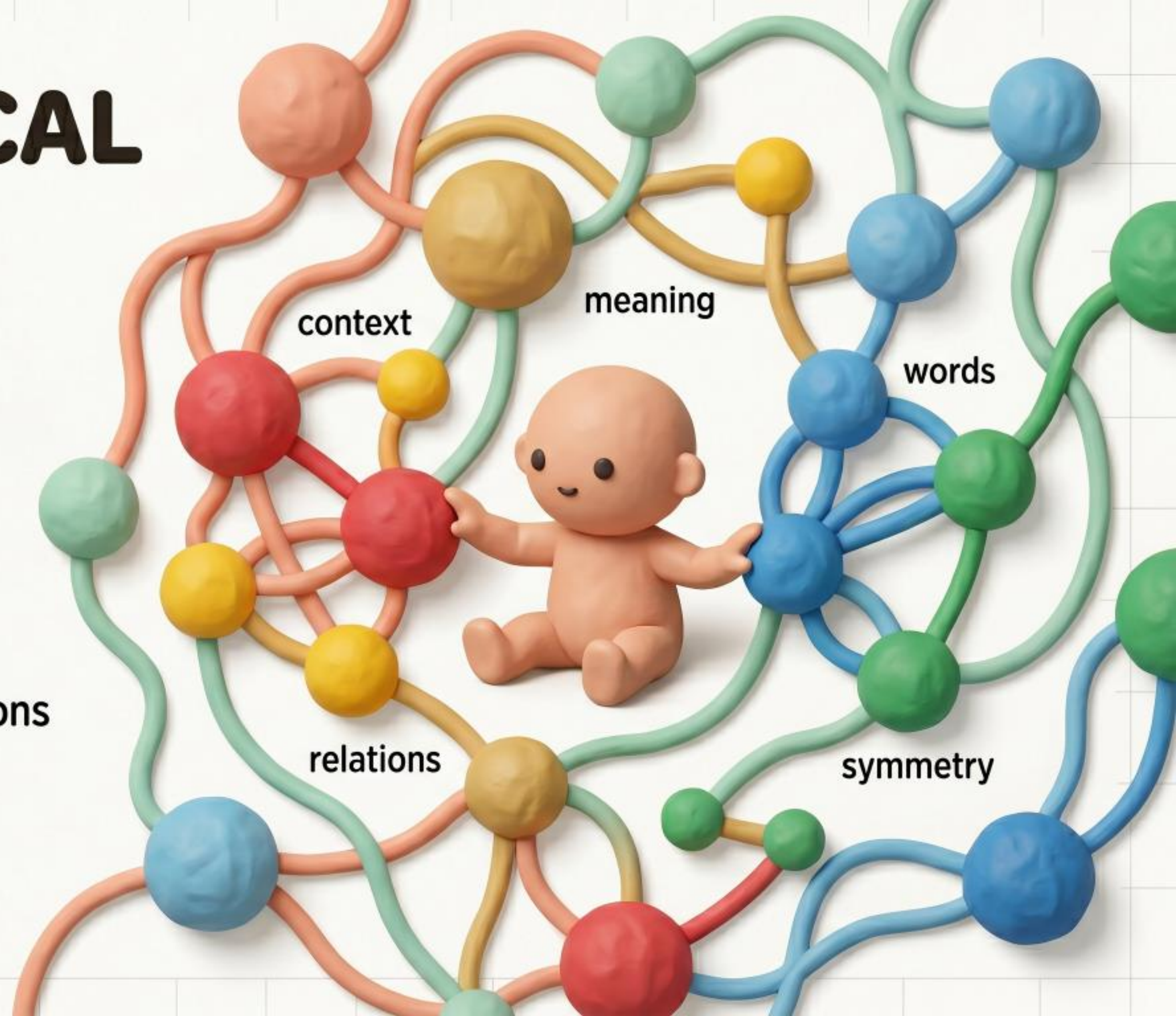
Explicit Rule Storage.  
Program-Dependent.  
Pre-coded systems.



# TOPOLOGICAL LEARNING

Language is a coherence map, not a ladder.

- Recognizing structures across contexts.
- Building interconnected webs of meaning.
- Mapping organic connections that no curriculum could predict.
- Simultaneously touching multiple concepts.



# THE SUPERCOMPARISON: 20 WATTS VS. 1,287 MWh

Child vs. Supercomputer:  
The efficiency gap.



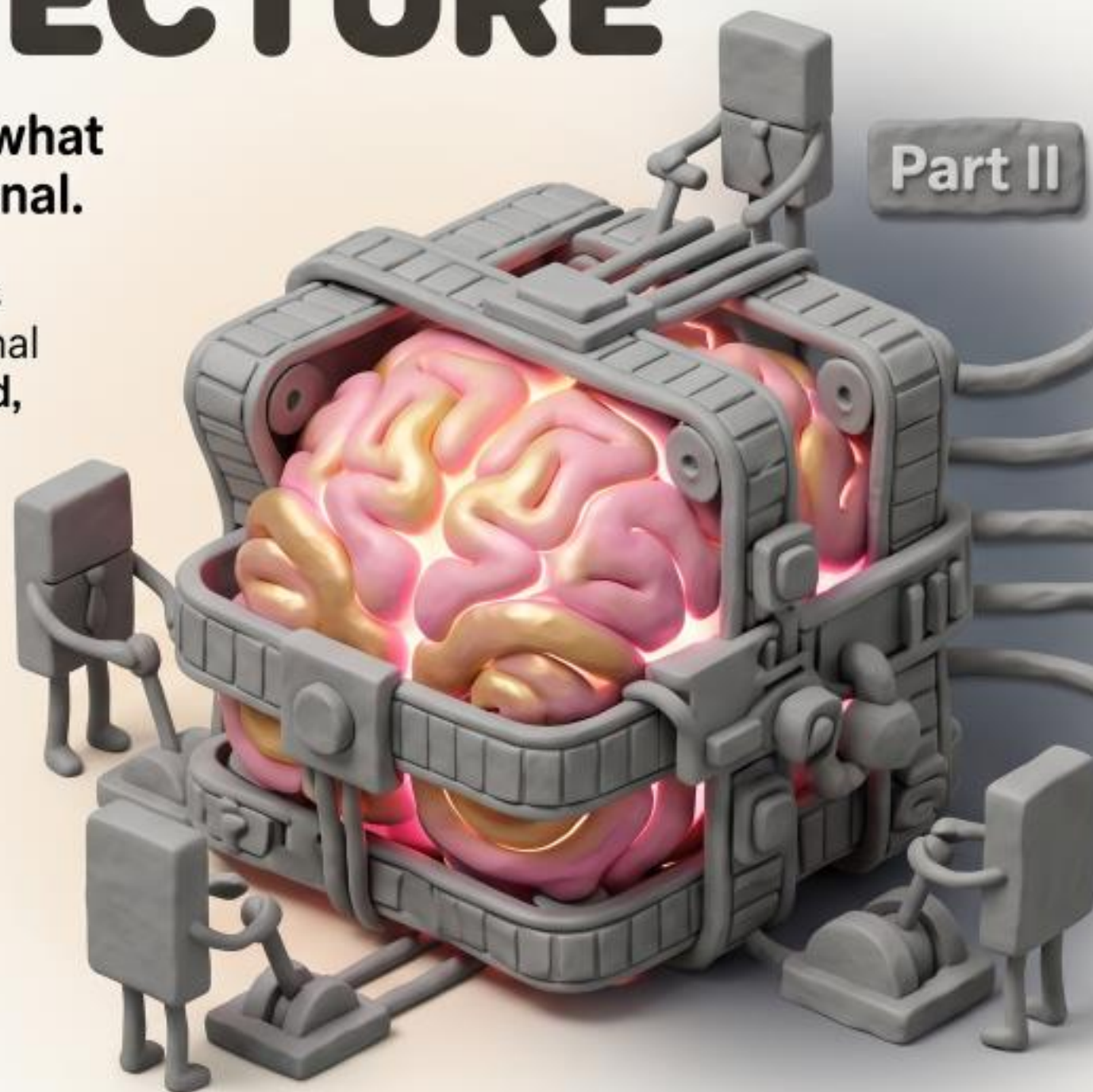
# THE SUPPRESSION ARCHITECTURE

How institutions linearize what is naturally multi-dimensional.

Institutions modify and compress an already active, multi-dimensional intelligence into linear, structured, and authority-based forms.

The core mechanisms of this suppression are:

- 👉 Institutional Linearization
- 👉 Binary Logic Compression
- 👉 Sequential Processing Mandates
- 👉 Language Obfuscation Systems
- 👉 Metric Reduction



Institutional Linearization



Binary Logic Compression



[WRONG] — [RIGHT]

Sequential Processing Mandates



Language Obfuscation Systems

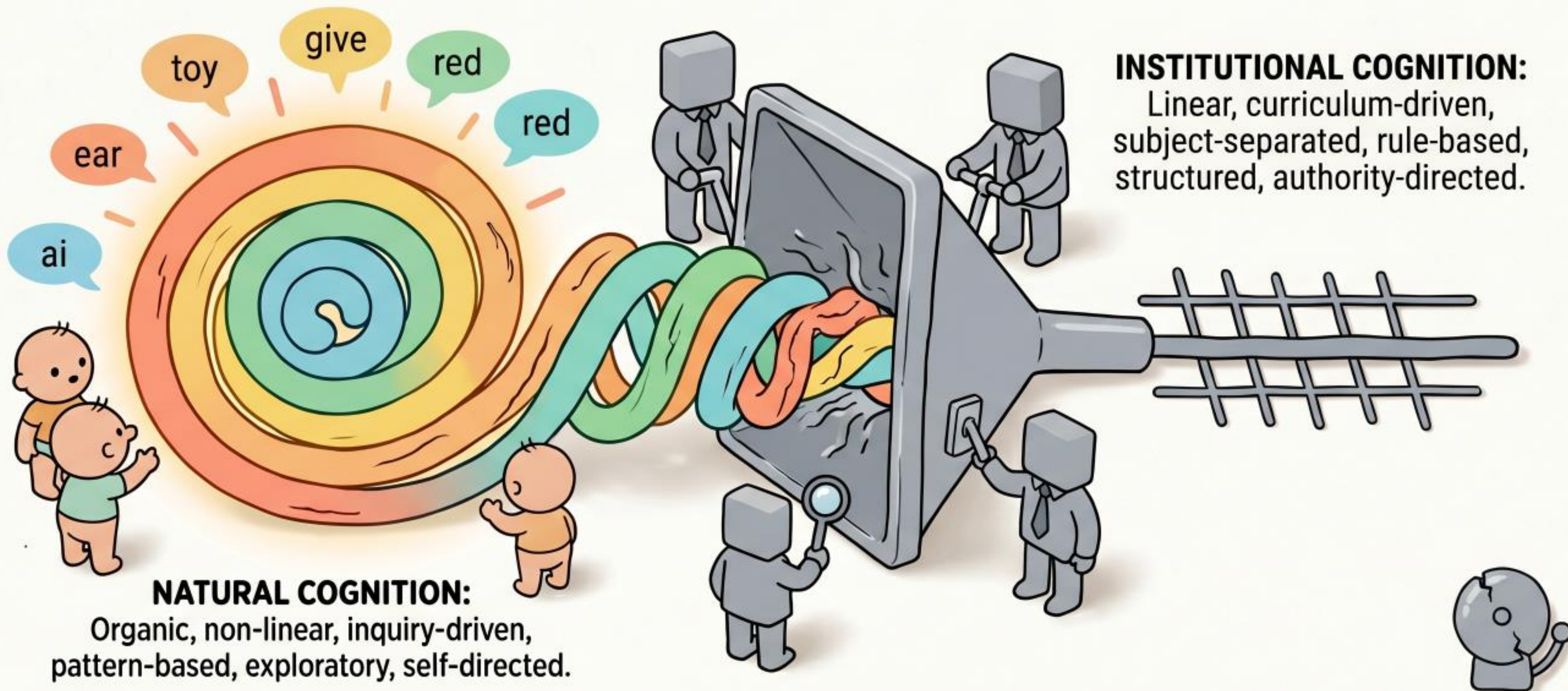


Metric Reduction



# LINEARIZATION

Organic cognition → Linear curriculum.



## INSTITUTIONAL COGNITION:

Linear, curriculum-driven, subject-separated, rule-based, structured, authority-directed.

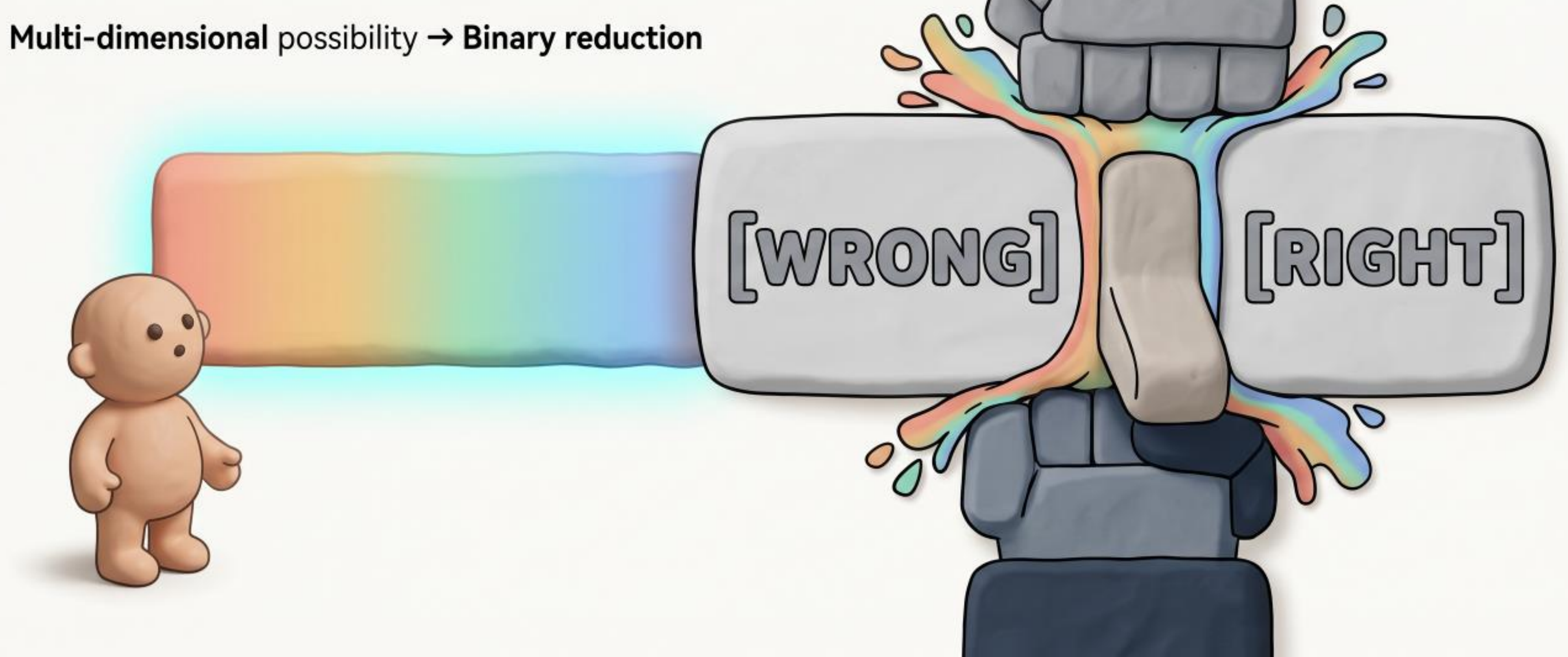
## NATURAL COGNITION:

Organic, non-linear, inquiry-driven, pattern-based, exploratory, self-directed.

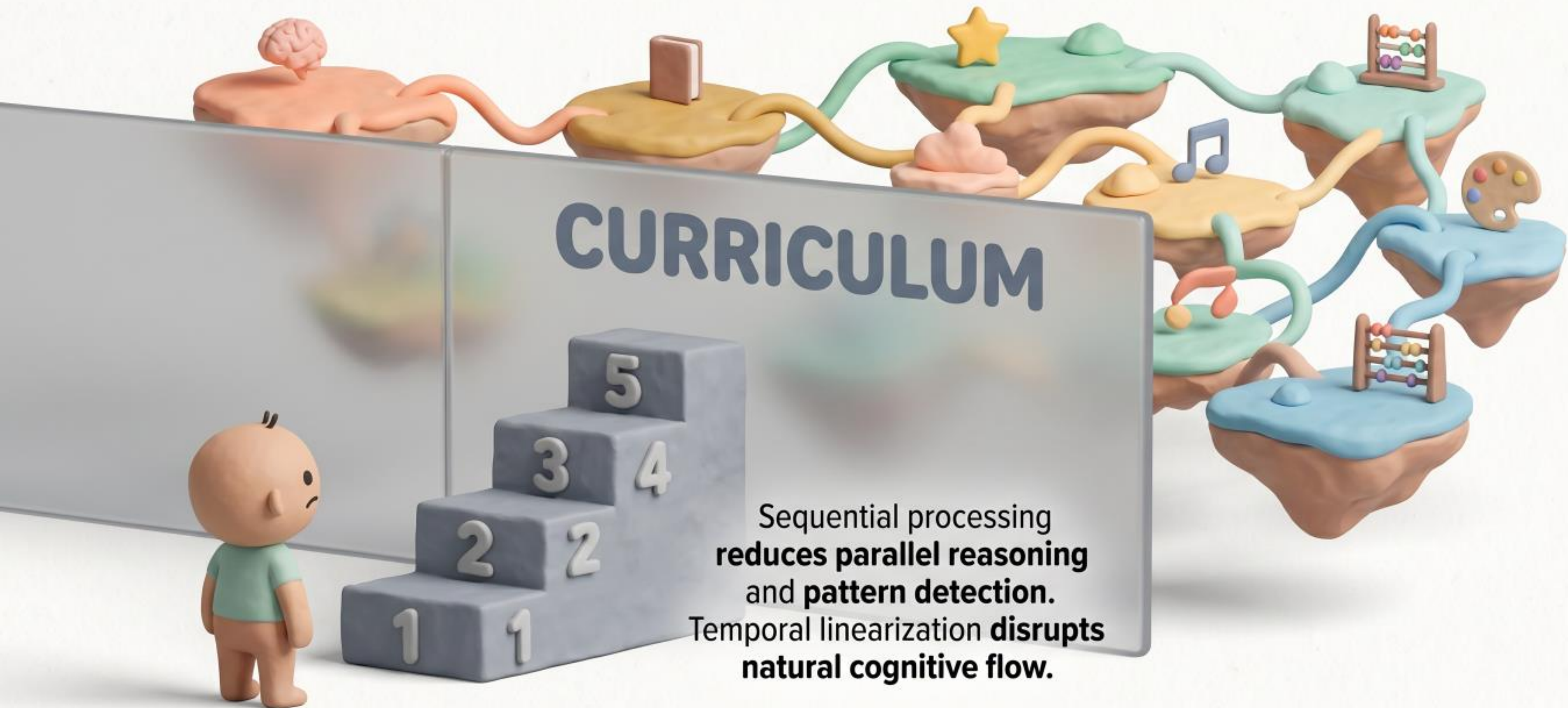
# BINARY COMPRESSION

**Gradient reasoning:** The natural state of human thought.  
Institutional systems compress intelligence into single outcomes.

**Multi-dimensional possibility** → **Binary reduction**



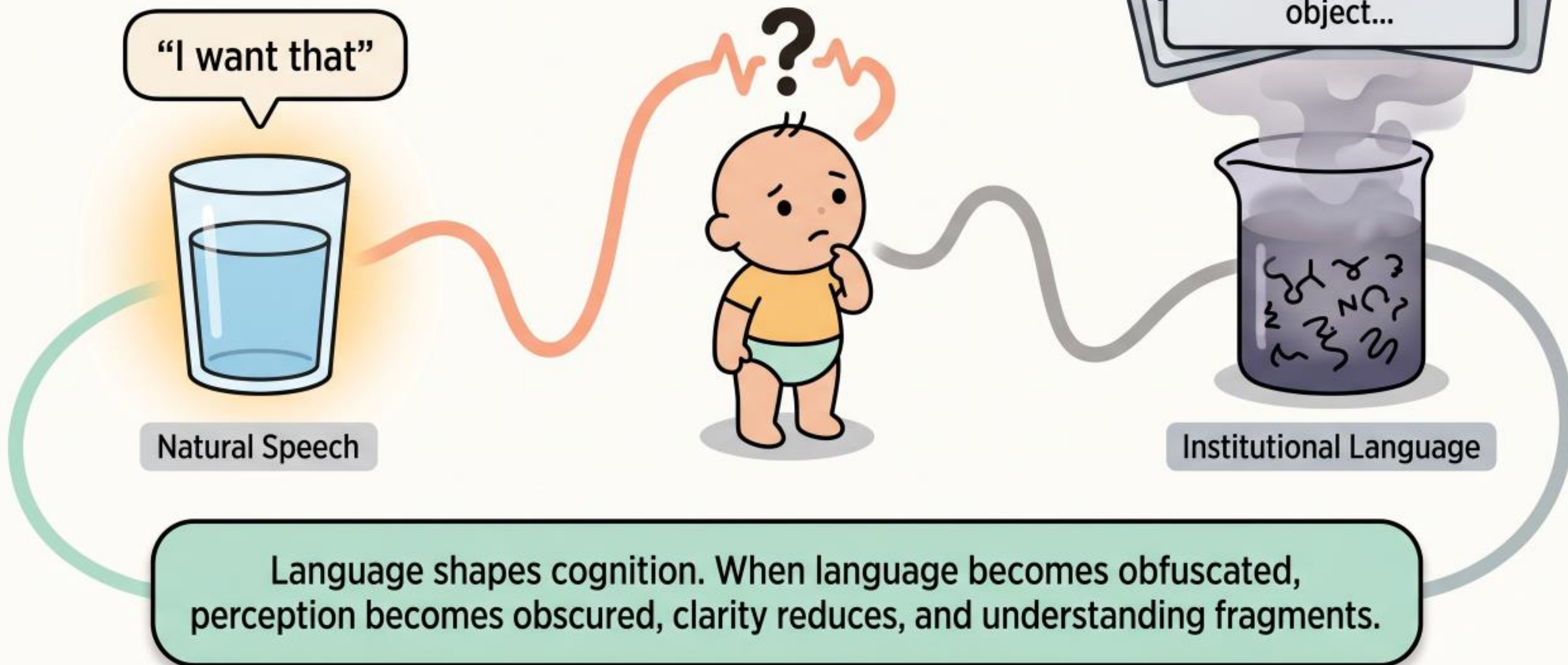
# SEQUENTIAL PRISON



Sequential processing  
**reduces parallel reasoning**  
and **pattern detection.**  
Temporal linearization **disrupts**  
**natural cognitive flow.**

# LANGUAGE OBFUSCATION

- Direct meaning replaced by abstract terminology.



# MONKEY MIND: NATIVE INTELLIGENCE



Continuous adaptive scanning & environmental mapping.

Tests states, adjusts attention, minimizes instability.

Transitions between focus, exploration, and reflection are essential.

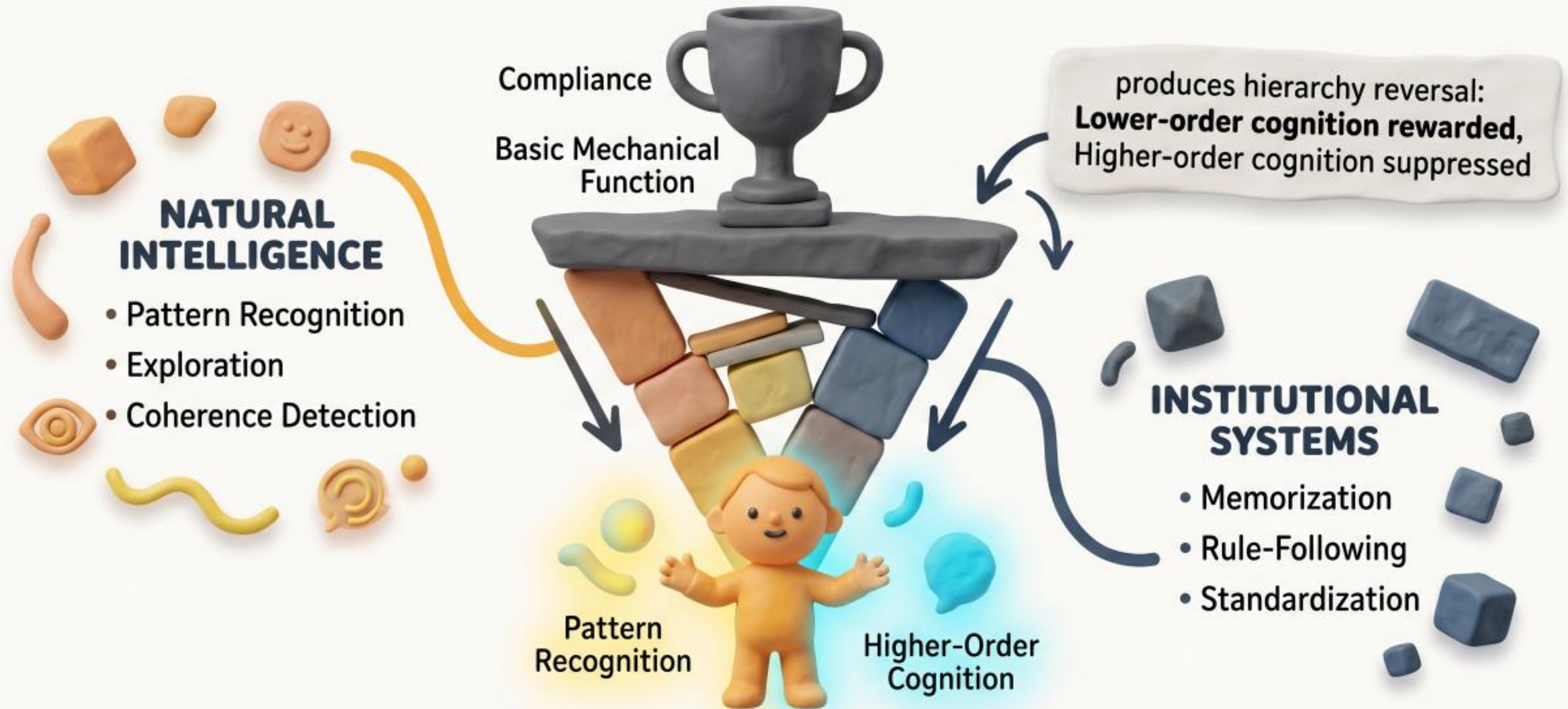
The Monkey Mind is native, dynamic intelligence, not disorder.

Tests states, adjusts attention, instability.

**Institutional Contrast:**  
Labeling exploration as distraction and restlessness as deficiency.



# INSTITUTIONAL INVERSION



# Self-Correction: The Internal Compass

Children self-correct without explicit instruction.  
Example: 'Goed' becomes 'went' —  
Demonstrating internal equilibrium sensing.



**AUTONOMOUS LEARNING:**  
Internal equilibrium sensing  
enables feedback-driven  
correction.

**NATURAL COGNITION:**  
Pattern detection and  
adjustment without  
external instruction.



**AUTHORITY-BASED  
COGNITION:**  
External rules stifle  
native correction,  
reducing autonomy.

# NASHMARK AI: EQUILIBRIUM NAVIGATION



**UNCERTAINTY**

**AMBIGUITY**

**NOISE**

NashMark AI formalizes equilibrium cognition through a mathematical framework. Internal self-stabilization (gyroscope) enables navigation without external control. State transitions and adaptive reasoning handle 'Uncertainty,' 'Ambiguity,' and 'Noise'.

# Truthvariant Language

LANGUAGE SHAPES COGNITION.

**Institutional Language:** Abstract, terminology-heavy, authority-based. Obscures perception.

**Truthvariant Language:** Direct, meaning-focused, observation-based. Clarifies structure.

**Institutional Language**



Structure

Direct Perception

**Truthvariant clarity**

Coherence-based meaning

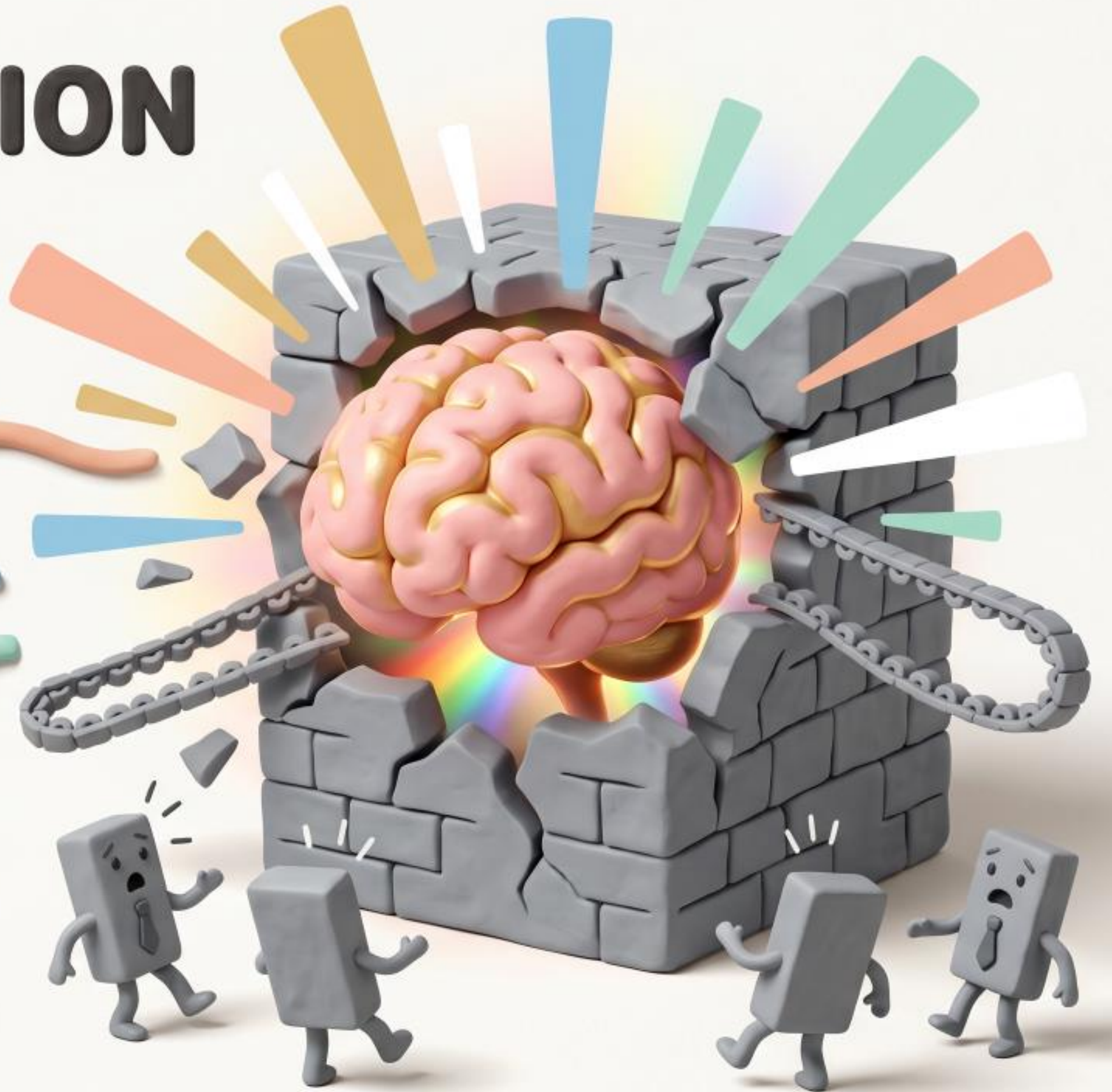
The child's breath blows away the fog of abstraction to reveal the perfect geometry of **geometry of meaning** underneath. Supports **autonomous cognition**.

# THE RESTORATION MODEL

**Recovery = Removal  
of Suppression  
(not Acquisition)**

**Intelligence is  
Restored,  
Not Created**

**Restore Native  
Cognition**  
(inquiry, pattern-based,  
adaptive)



# Coherence-Based Education

**Main Header:** Inquiry-Driven Exploration

**Refined Bullet Points:**

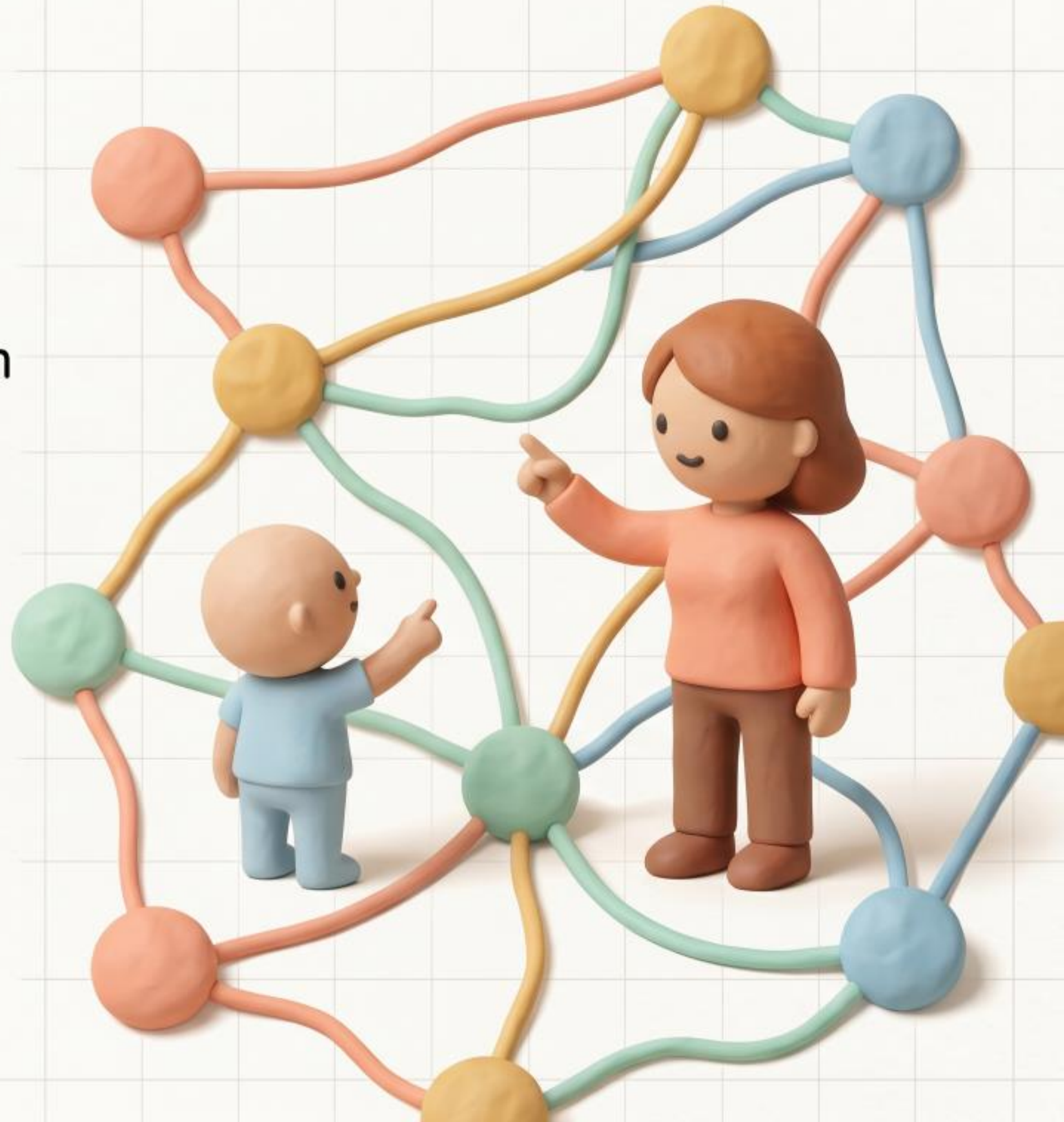
- **Teacher as Guide:** Modulation, not rigid instruction.



- **Focus on Understanding:** Pattern recognition & cross-domain reasoning.



- **Exploratory Learning:** Navigating connections over sequential steps.



# CROSS-SCALE EQUILIBRIUM

Unified equilibrium intelligence  
operates across all scales.

Individual Cognition → Navigation  
→ Population → Governance



Systems share universal properties: adaptation, state transition, pattern formation, and seeking equilibrium.



# THE AUTONOMOUS FUTURE

AI expands inquiry,  
not replaces human  
intelligence.

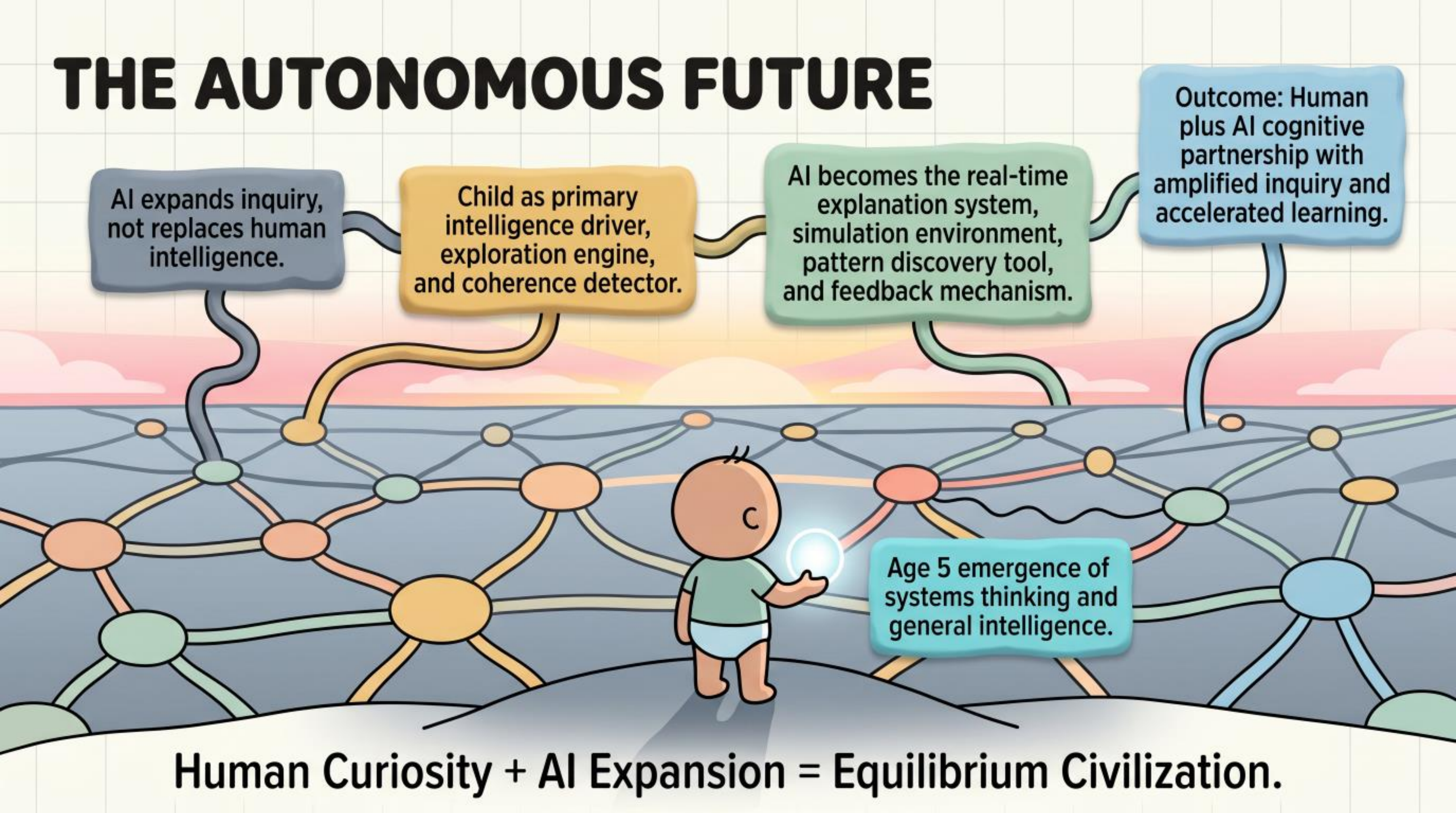
Child as primary  
intelligence driver,  
exploration engine,  
and coherence detector.

AI becomes the real-time  
explanation system,  
simulation environment,  
pattern discovery tool,  
and feedback mechanism.

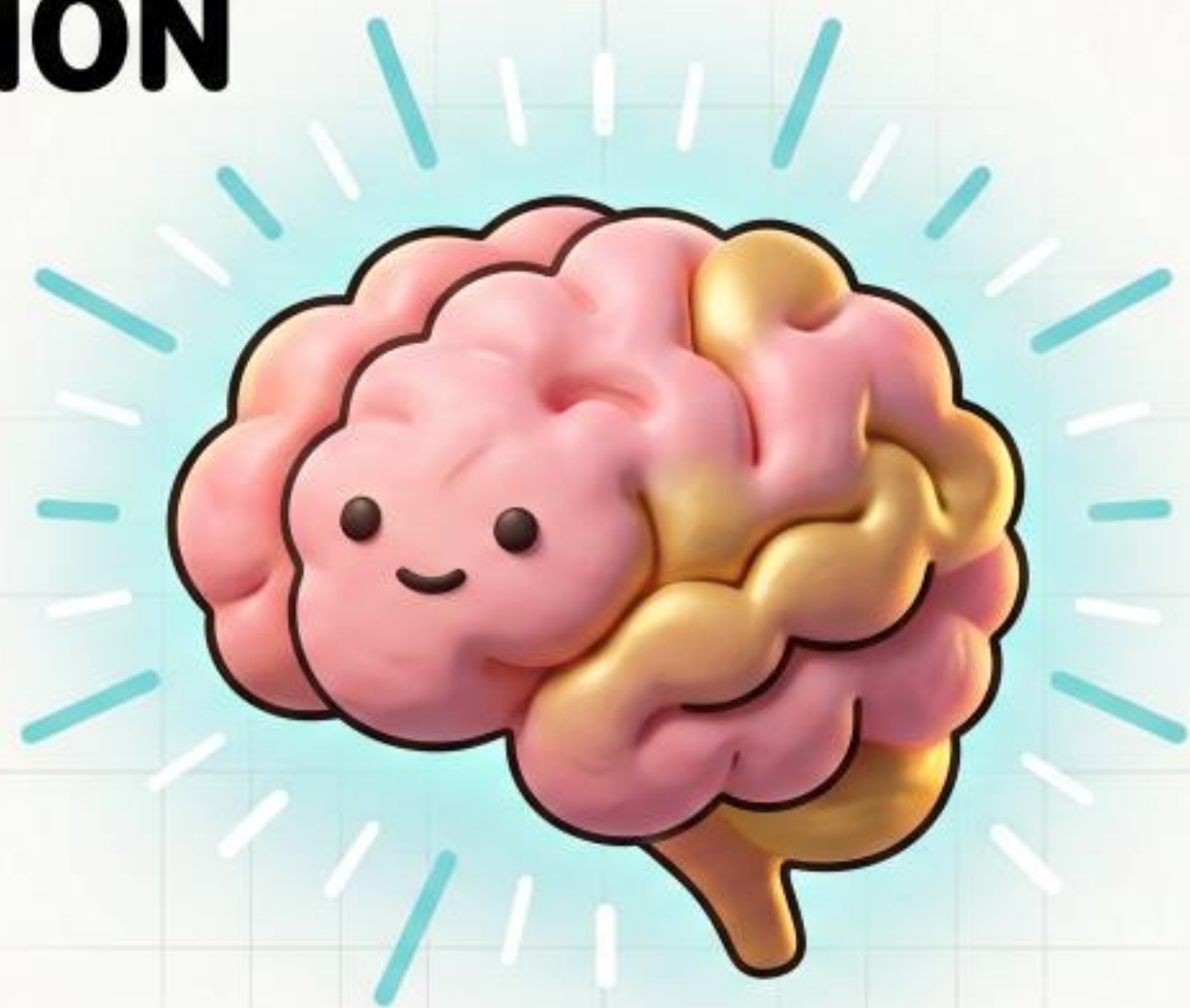
Outcome: Human  
plus AI cognitive  
partnership with  
amplified inquiry and  
accelerated learning.

Age 5 emergence of  
systems thinking and  
general intelligence.

**Human Curiosity + AI Expansion = Equilibrium Civilization.**



# THE PROPOSITION



**Autonomy is the natural  
condition for intelligence.**