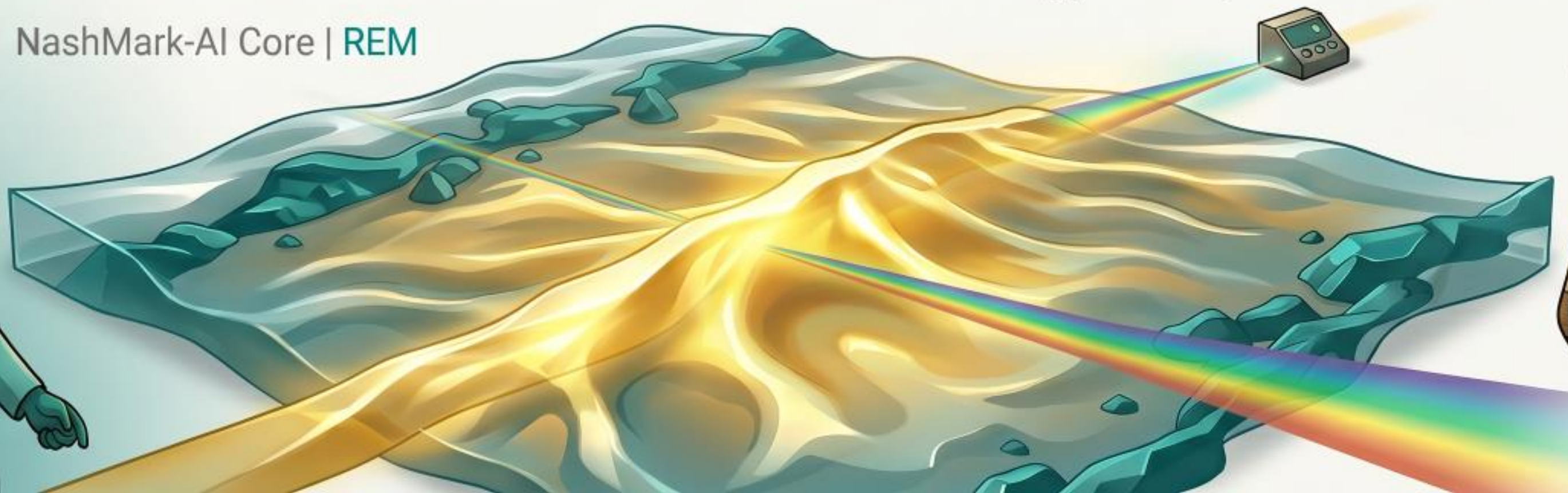


# EQUILIBRIUM OBSERVATION

A Manifold-Based Alternative to Phenomenology and Quantum Closure

NashMark-AI Core | [REM](#)

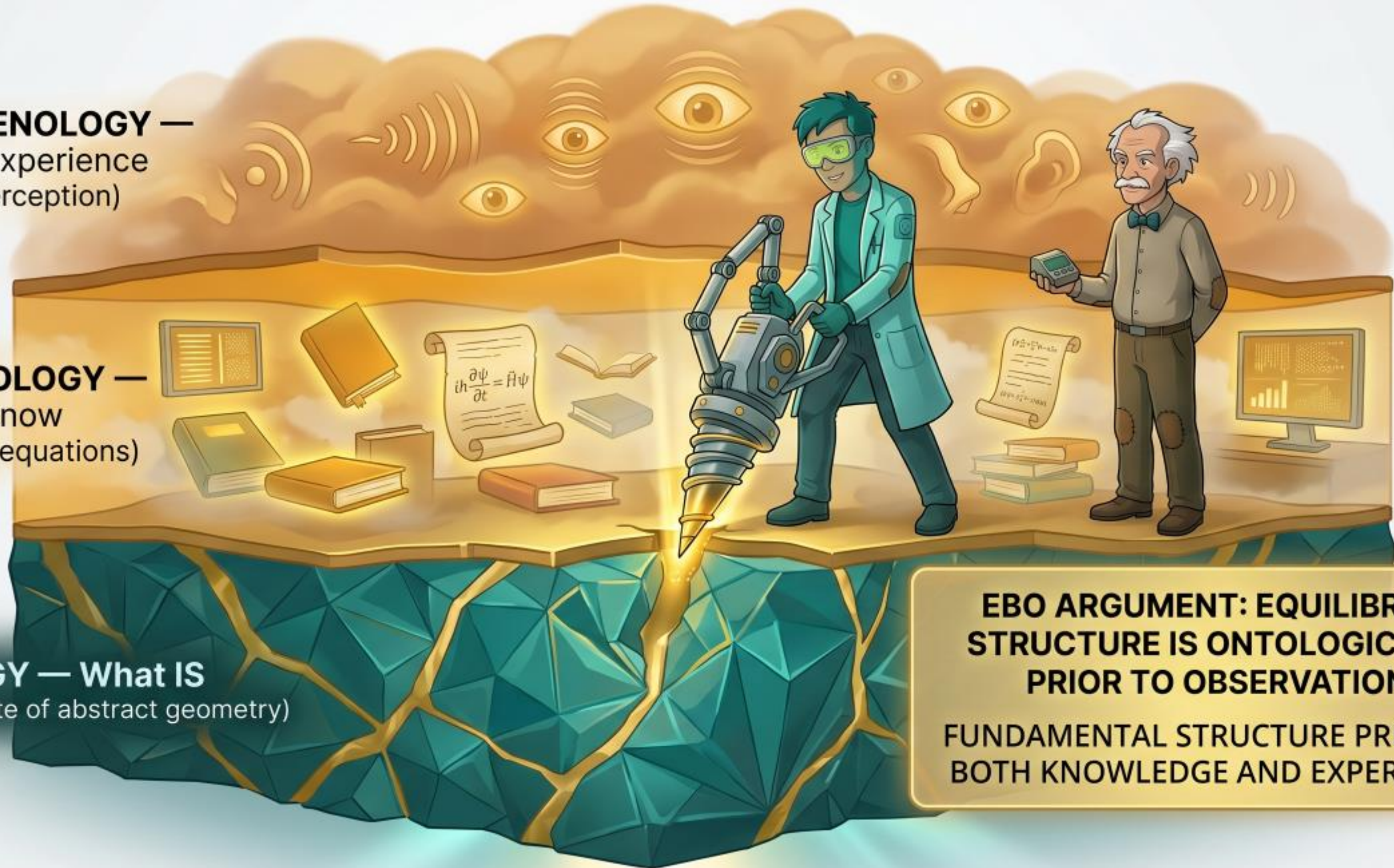


# ONTOLOGY: WHAT EXISTS BEFORE WE LOOK?

**PHENOMENOLOGY** —  
What we experience  
(Sensory perception)

**EPISTEMOLOGY** —  
What we know  
(Books and equations)

**ONTOLOGY** — **What IS**  
(The substrate of abstract geometry)



**EBO ARGUMENT: EQUILIBRIUM  
STRUCTURE IS ONTOLOGICALLY  
PRIOR TO OBSERVATION.**

**FUNDAMENTAL STRUCTURE PRECEDES  
BOTH KNOWLEDGE AND EXPERIENCE.**

# SEMANTIC NOISE: WHY LANGUAGE FAILS AT THE FRONTIER

## THE SEMANTIC FRONTIER

Words like 'consciousness' and 'reality' carry conflicting definitions and historical baggage.

Language is built on shared history; it collapses when asked to stabilize the unknown.

## THE EQUILIBRIUM MANIFOLD

Behind the noise, the equilibrium manifold glows silently. A direct, geometric substrate. Accessible through a different pathway.



## CONSCIOUSNESS

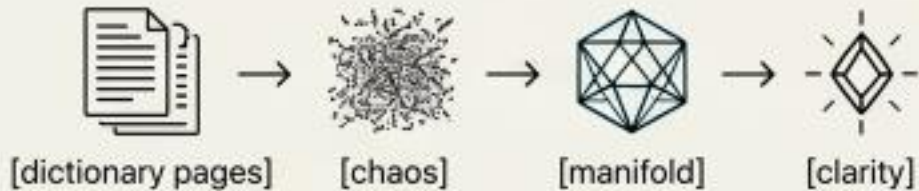
? Conflicting brain soros  Soul symbols 

 Frogment ghost not sliant on orode in SOLD solid cube 

## REALITY?

## OBSERVATION

## SELF



# MATH AS PRE-LINGUISTIC STRUCTURE

**Language (Top):**  
Late Binding

consciousness

meaning

observer



**Semantics (Middle):**  
Cultural Agreement



**Mathematics (Bottom):**  
Pre-Linguistic Stability

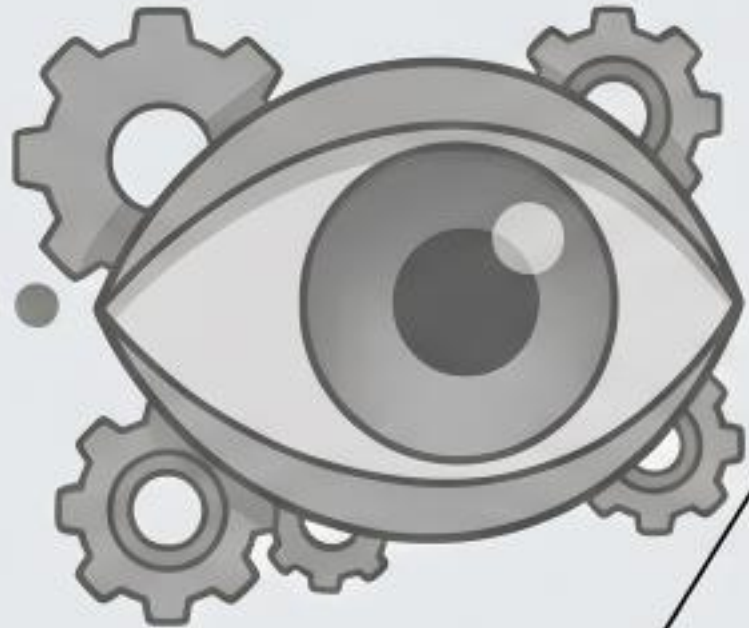
"Mathematics does not depend on consensus — it stabilizes meaning before language before language arrives."

"The manifold is accessed through structural invariance, not words."

$$\Delta = C(x) - \Omega(x)$$

EBO operates pre-linguistically. Equilibrium is not defined. It is derived.

## CLASSICAL PHYSICS



Simple particle beam

# THE OBSERVER'S DILEMMA

## PHENOMENOLOGY



STATE → OBSERVE → RECONSTRUCT



STATE  
APPEARS

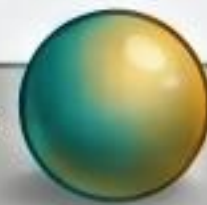
OBSERVE



RECONSTRUCT



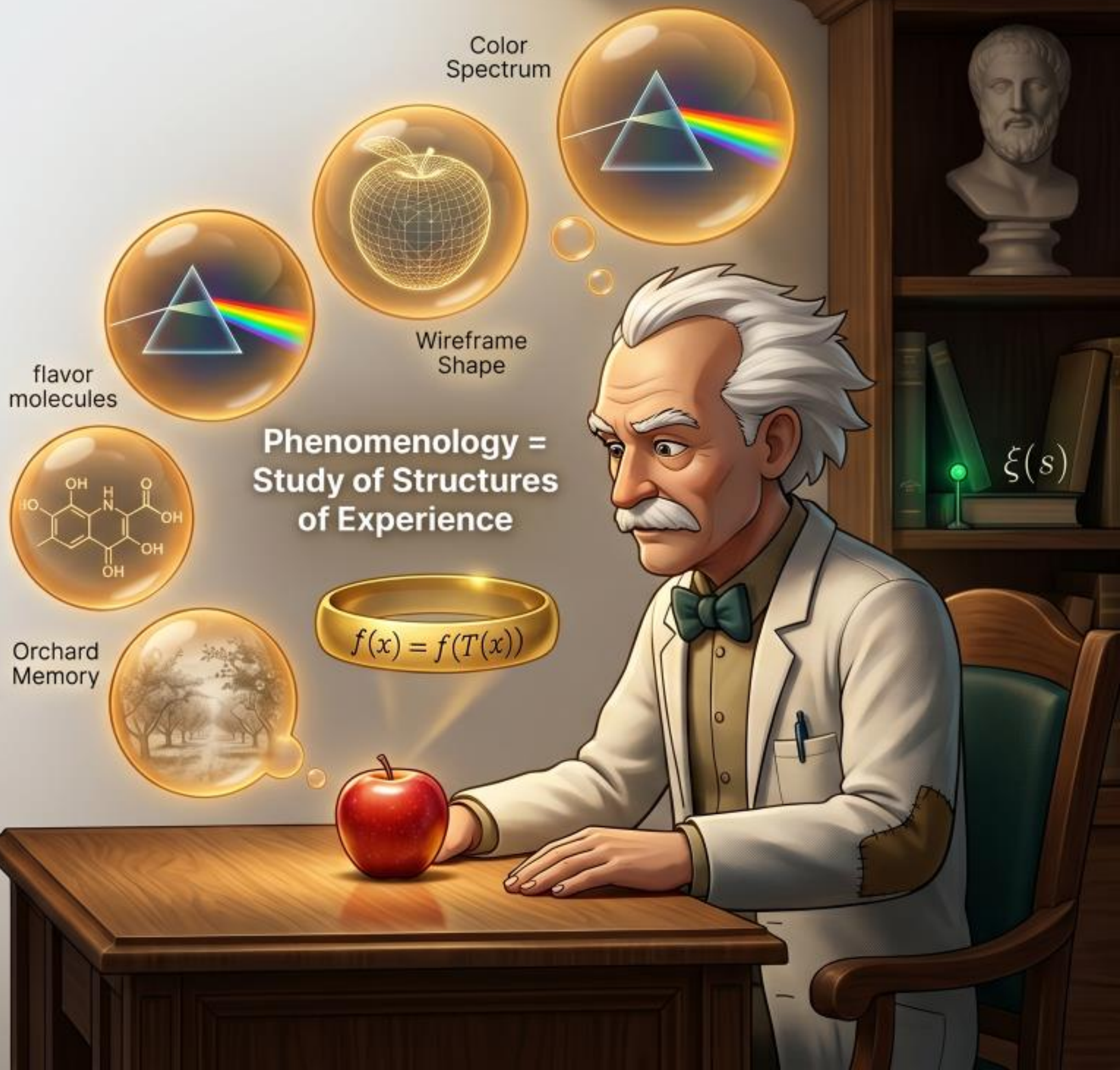
\*Diagnostic Sequence waits  
for states to appear.\*



# WHAT IS PHENOMENOLOGY?

## The Phenomenon: Consciousness as Constitutive

- Objects are *appearance-for-a-subject*, not subject, not just matter.
- Reality is already structured by the act of perception.
- Object and its given-ness to the mind are inseparable.



Color  
Spectrum

Wireframe  
Shape

flavor  
molecules

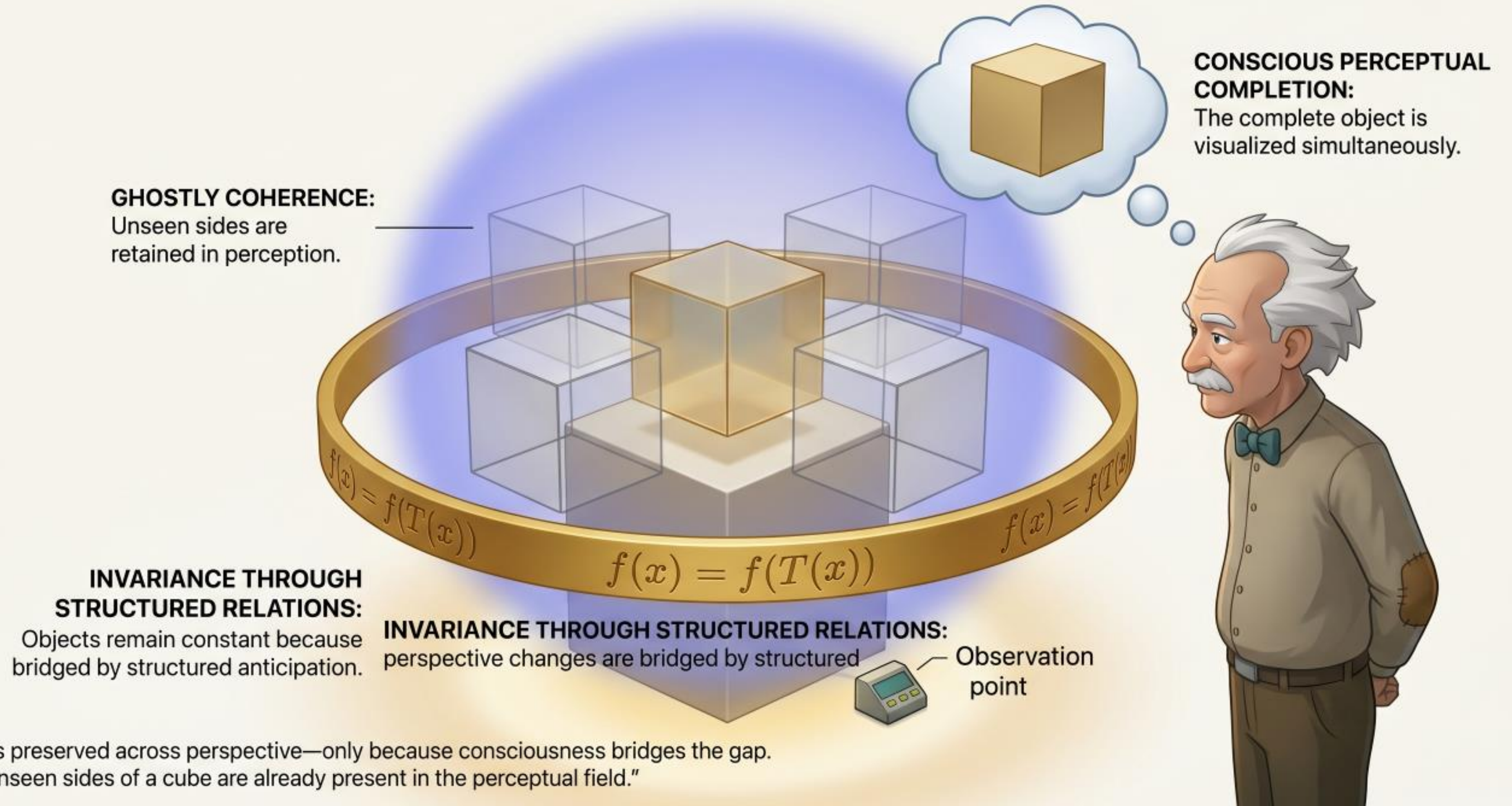
Phenomenology =  
Study of Structures  
of Experience

Orchard  
Memory

$$f(x) = f(T(x))$$

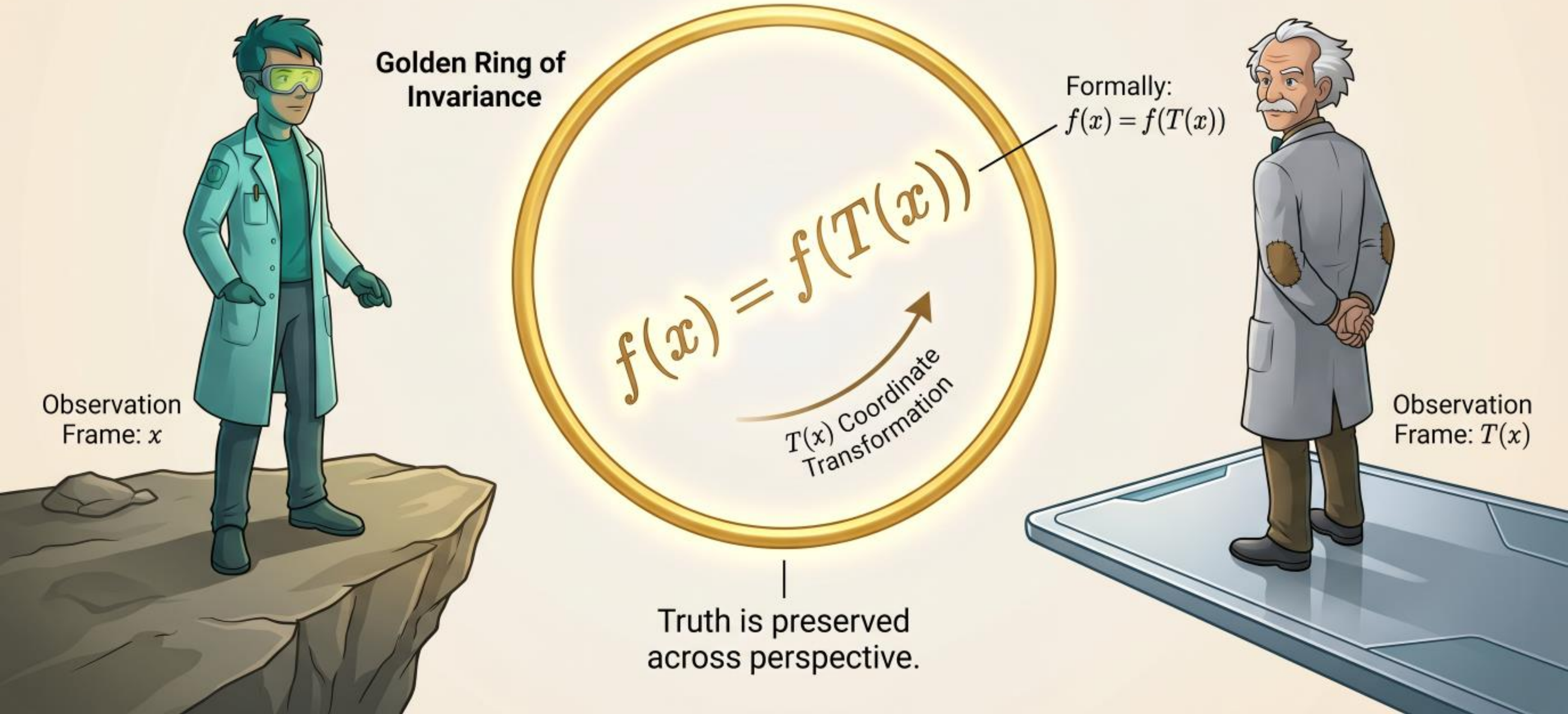
$\xi(s)$

# THE PHENOMENOLOGY VIEW: OBJECTIVITY THROUGH RELATION



Truth is preserved across perspective—only because consciousness bridges the gap.  
“The unseen sides of a cube are already present in the perceptual field.”

# OBJECTIVITY AS INVARIANCE: THE PHYSICS VIEW



# WHAT IS QUANTUM PHYSICS?

## GOVERNS ATOMS, ELECTRONS, AND LIGHT.

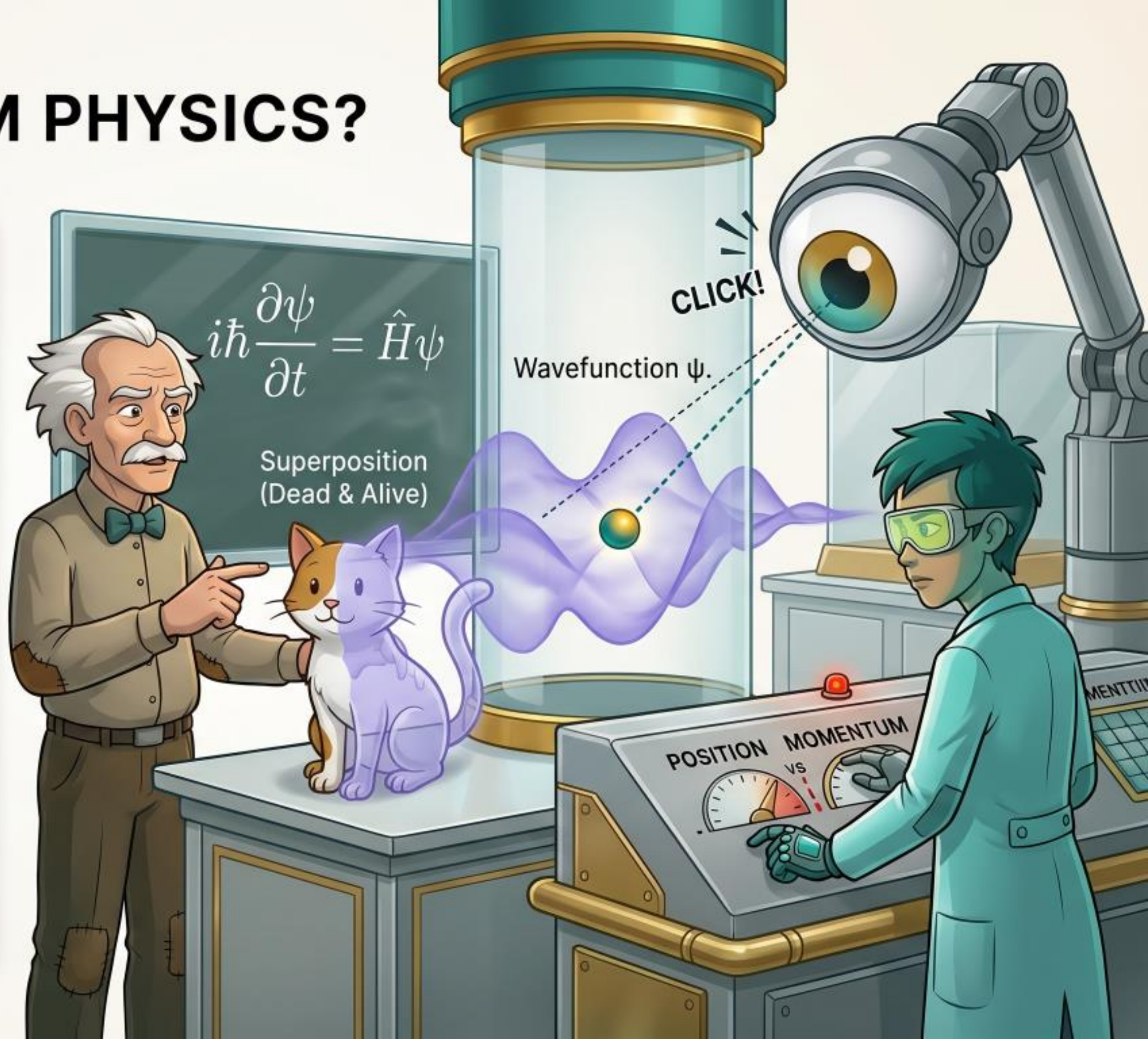
(The rules of the very small). The most accurate physical theory ever built.

## PARTICLES EXIST IN SUPERPOSITION

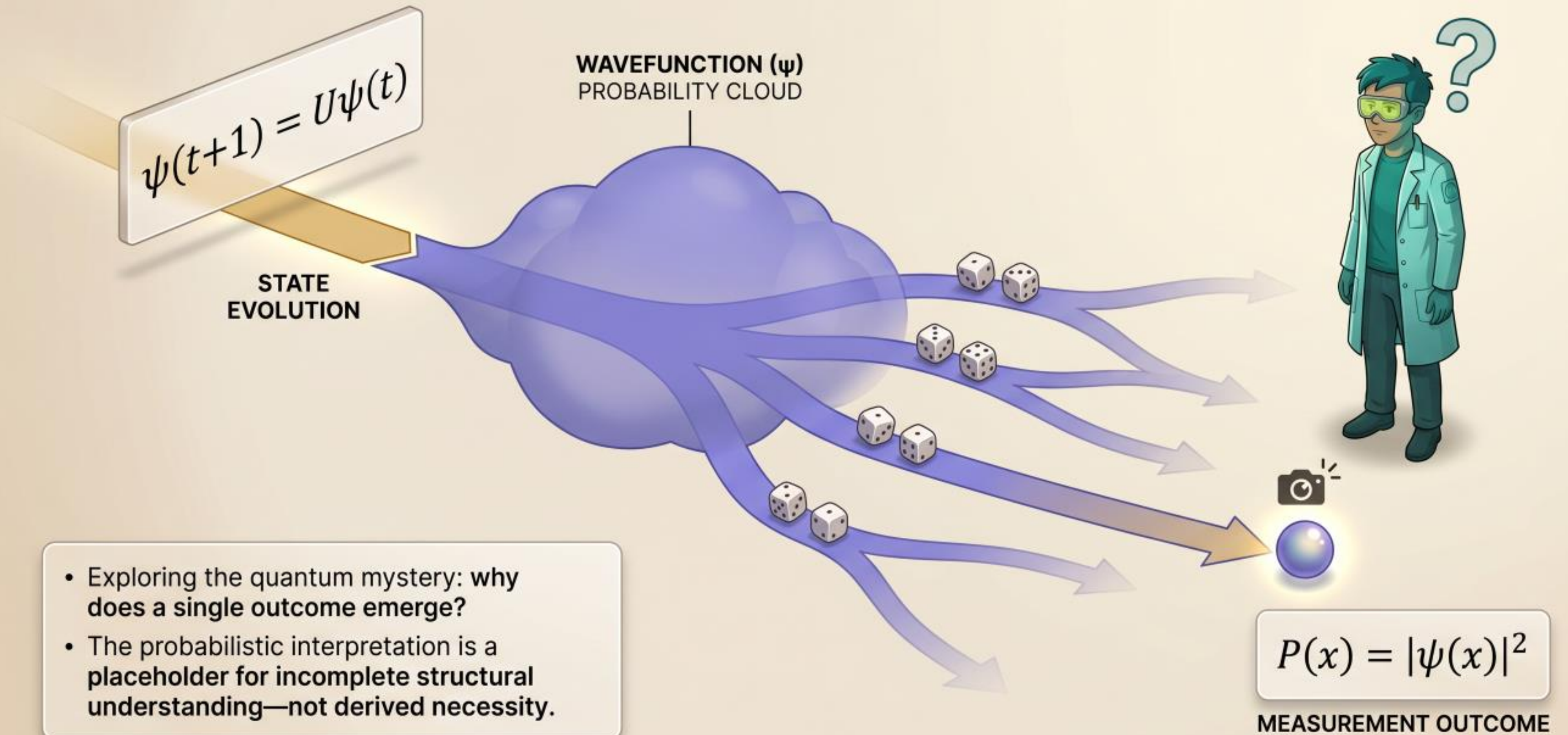
(of multiple states simultaneously), described by the Wavefunction ( $\psi$ ), until a Measurement is made.

## THE ACT OF OBSERVATION COLLAPSES THE WAVEFUNCTION

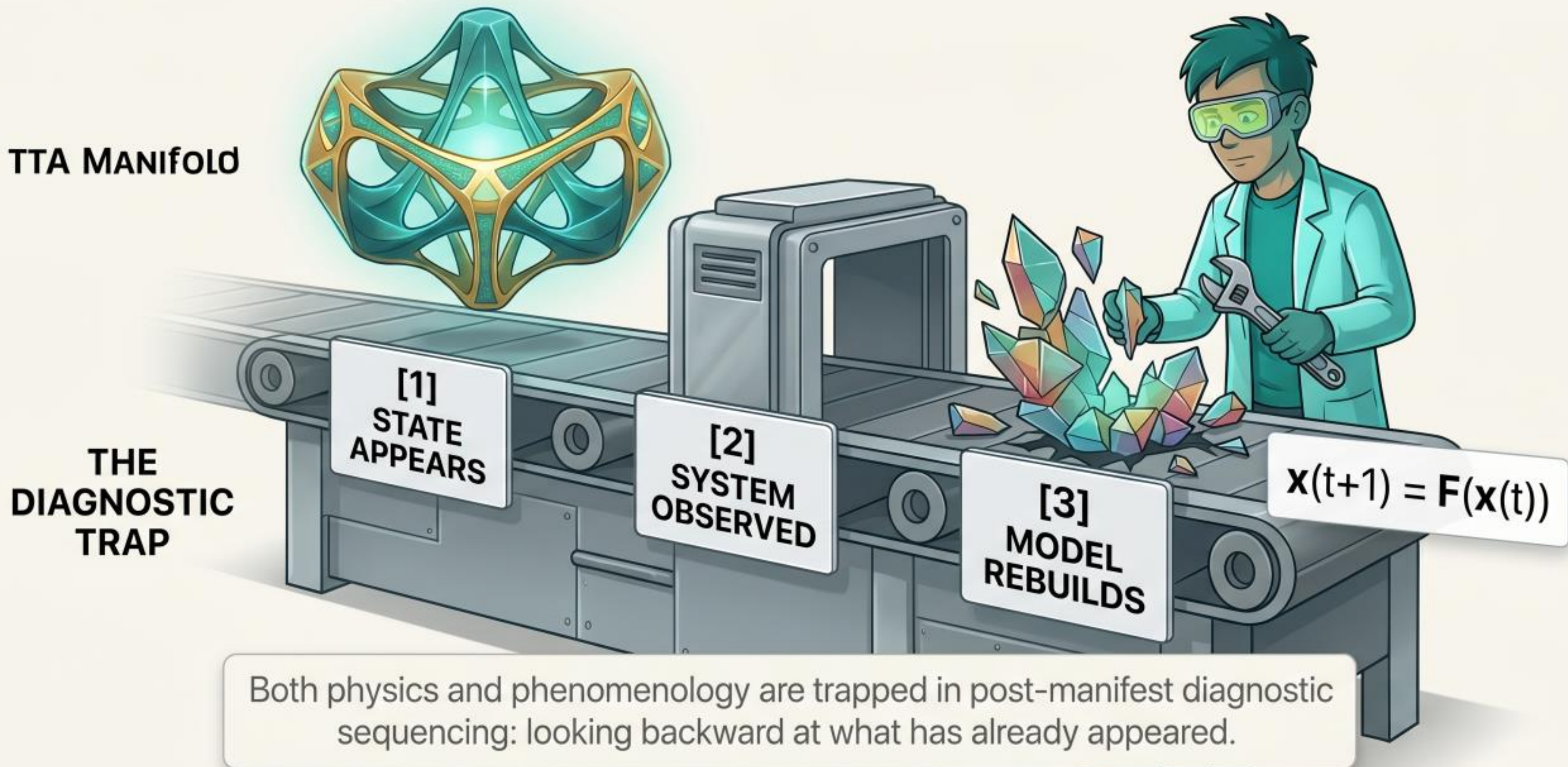
discretely into one certain state, a foundational unsolved mystery—the **Measurement Problem**.



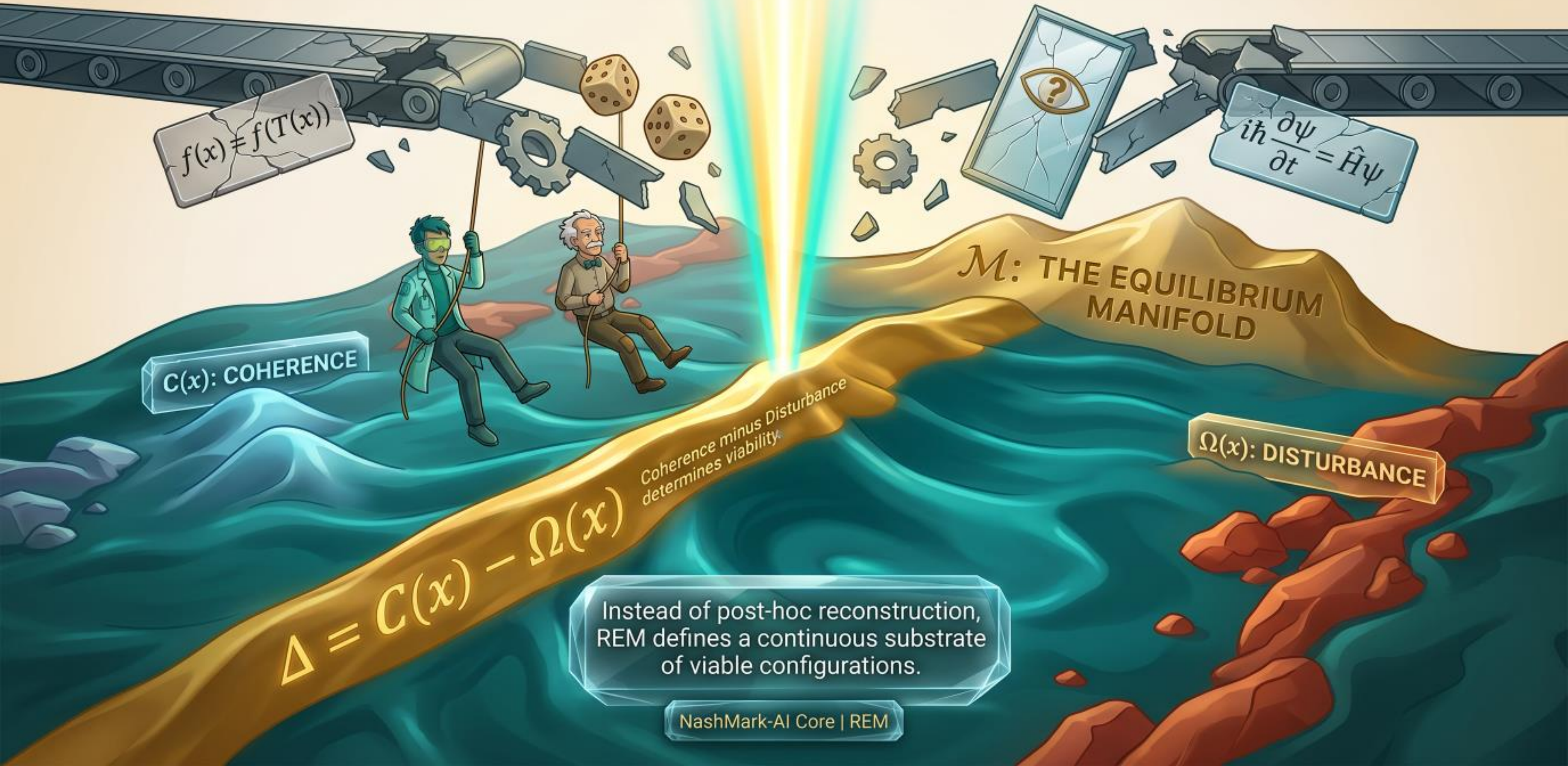
# QUANTUM MECHANICS: PROBABILISTIC CLOSURE



# THE SHARED FLAW: POST-MANIFEST RECONSTRUCTION



# ENTER THE EQUILIBRIUM MANIFOLD



$$f(x) \neq f(T(x))$$

$$i\hbar \frac{\partial \psi}{\partial t} = \hat{H} \psi$$

C(x): COHERENCE

Ω(x): DISTURBANCE

$$\Delta = C(x) - \Omega(x)$$

Coherence minus Disturbance determines viability.

M: THE EQUILIBRIUM MANIFOLD

Instead of post-hoc reconstruction, REM defines a continuous substrate of viable configurations.

# WHERE DID REM COME FROM? THE RIEMANN HYPOTHESIS

$$\xi(s) = \xi(1-s)$$

The Riemann Hypothesis traces mathematical provenance. It investigates one of mathematics' deepest structures—the distribution of prime numbers—governed by a hidden symmetry within the completed zeta function  $\xi(s)$ .

The critical line  $\text{Re}(s)=1/2$  is not a target, but a primary structural axis to recognize.

Critical Line:  
 $\text{Re}(s) = 1/2$

# THE ZETA FIELD: A HIDDEN LANDSCAPE

The zeta function is not just number theory.  
It is a stability field.



$$U(x, t) = \log(|\Xi(x + it)|^2 + \epsilon)$$

STABLE MINIMA |  
ZERO-CLOSURE EVENTS

CRITICAL LINE |  
EQUILIBRIUM AXIS

By mapping non-trivial zeros as  
stable minima, the zeta field reveals  
a hidden potential landscape.  
A continuous equilibrium governs  
every point, making alignment  
on the critical line inevitable.



# LYAPUNOV STABILITY: THE MATHEMATICAL LENS



## MATHEMATICAL VERIFICATION

Mathematically guaranteed **stability** of the equilibrium manifold.

The Lyapunov analysis provides a definitive **structural** guarantee.

Verified, not assumed, **through dynamic systems** theory, replacing hope with **mathematical certainty**.

# THE NASH-MARKOV DRIFT MACHINE



Restoration Rule:  
$$\sigma_{t+1} = \sigma_t - \lambda(\sigma_t - 1/2) + \varepsilon_t$$
  
DYNAMICAL RESTORATION ACTIVE  
Convergence Guaranteed



Wildly Perturbed  
( $\sigma=0.8$ )

Physical Proof  
of Restoration

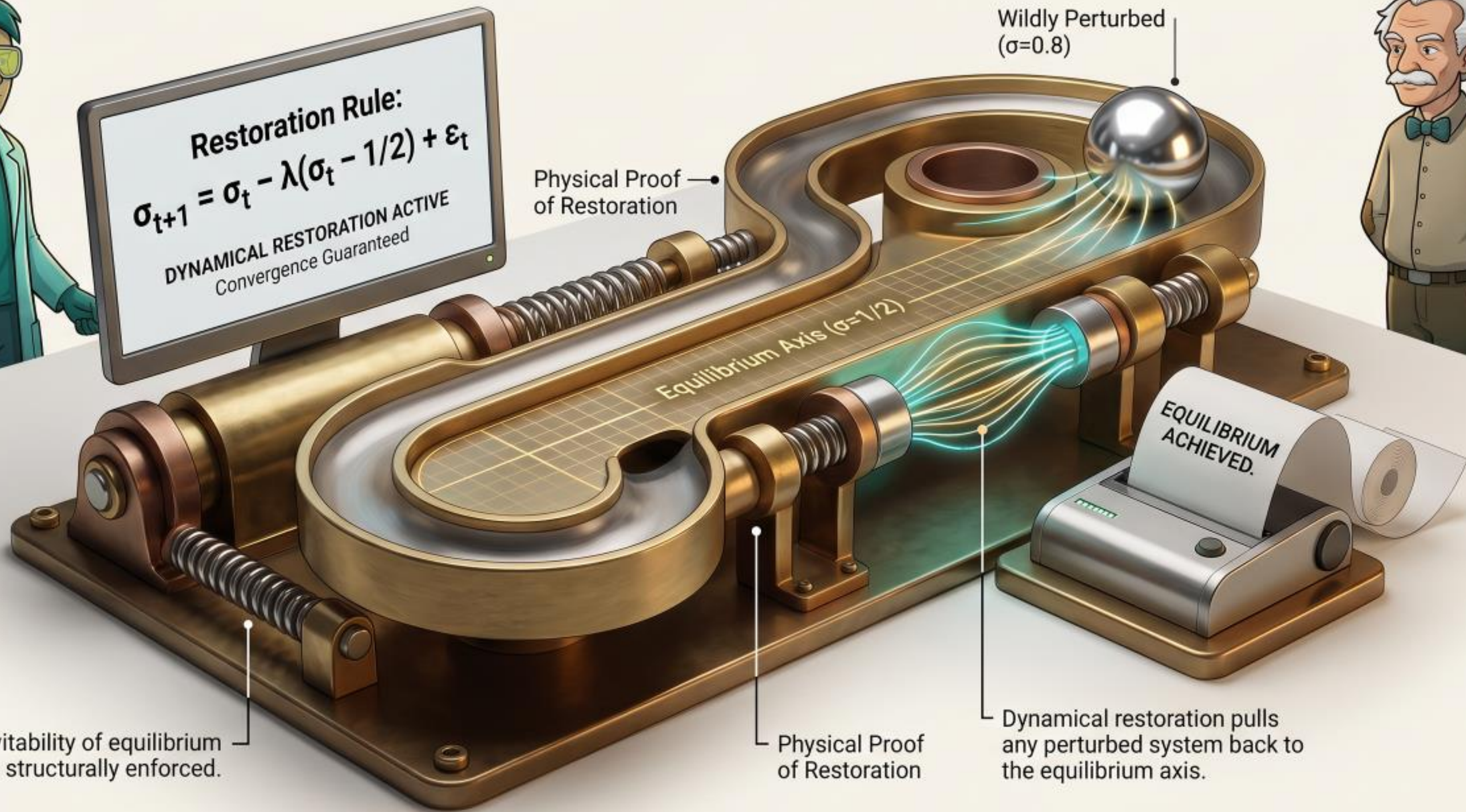
Equilibrium Axis ( $\sigma=1/2$ )

EQUILIBRIUM  
ACHIEVED.

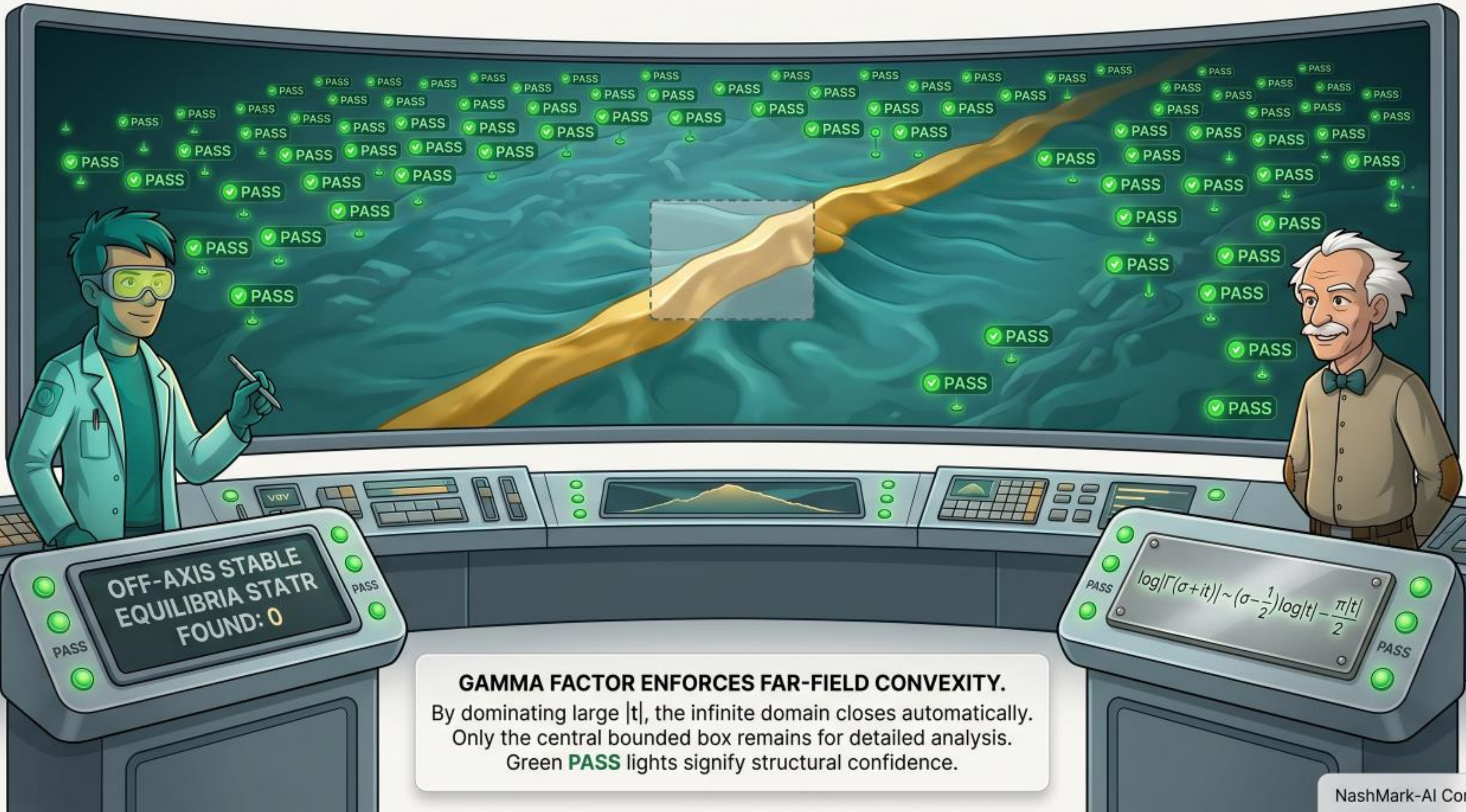
Inevitability of equilibrium  
is structurally enforced.

Physical Proof  
of Restoration

Dynamical restoration pulls  
any perturbed system back to  
the equilibrium axis.



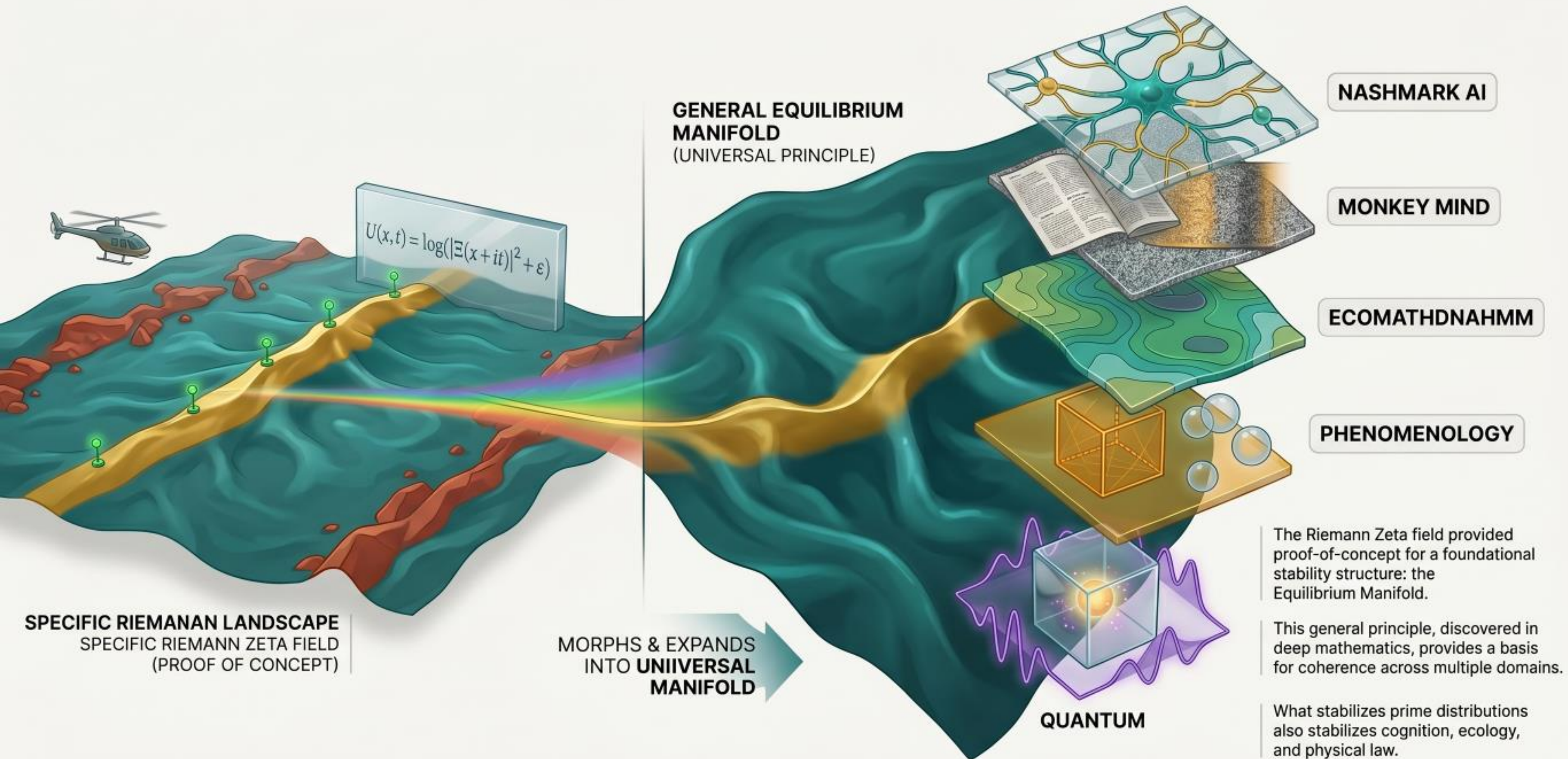
# THE GAMMA FACTOR GUARDIAN



## GAMMA FACTOR ENFORCES FAR-FIELD CONVEXITY.

By dominating large  $|t|$ , the infinite domain closes automatically. Only the central bounded box remains for detailed analysis. Green **PASS** lights signify structural confidence.

# FROM NUMBER THEORY TO UNIVERSAL PRINCIPLE



# THE EQUILIBRIUM MANIFOLD EXPLAINED

**M:** Set of all viable configurations.

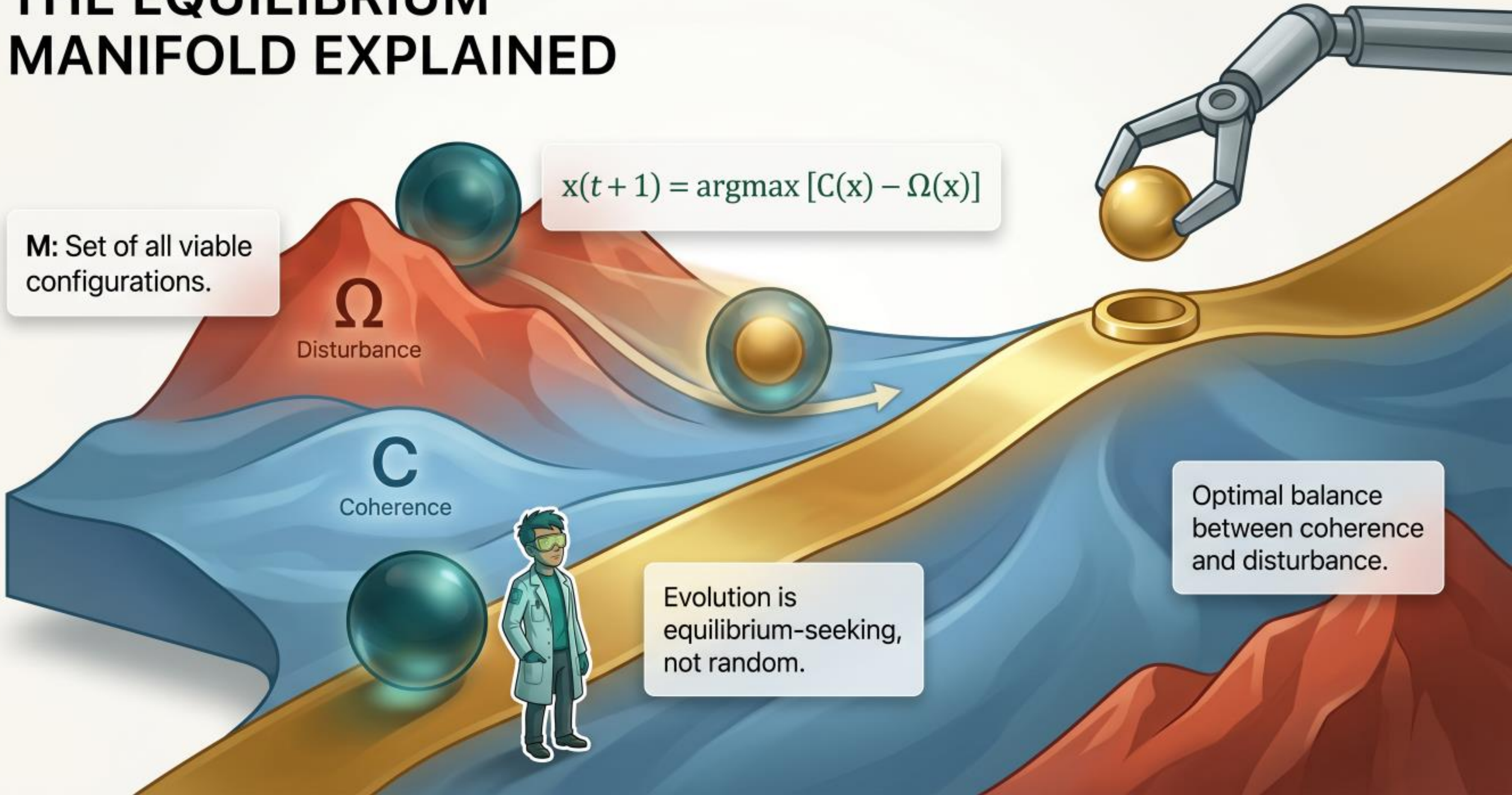
$$x(t + 1) = \operatorname{argmax} [C(x) - \Omega(x)]$$

$\Omega$   
Disturbance

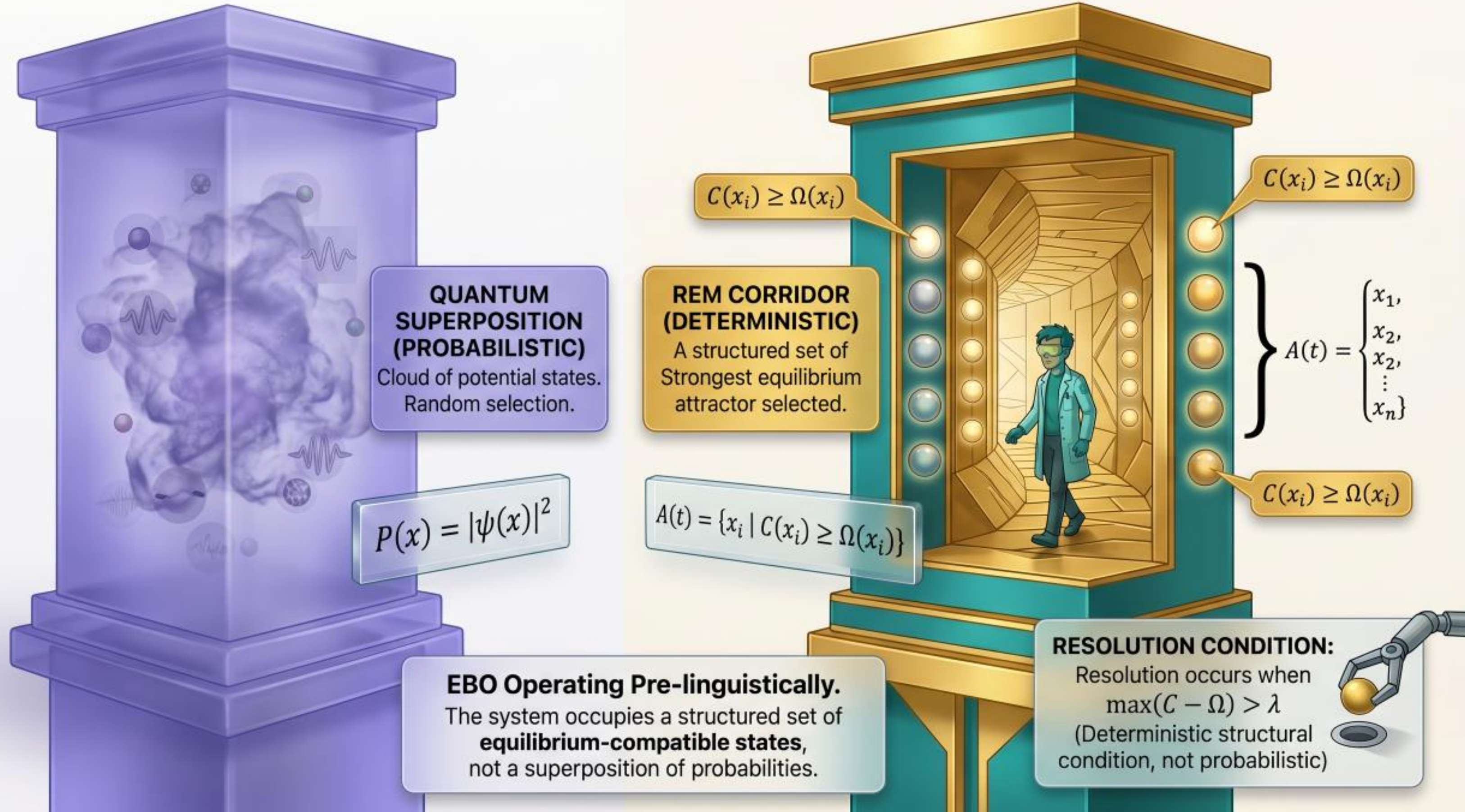
$C$   
Coherence

Optimal balance  
between coherence  
and disturbance.

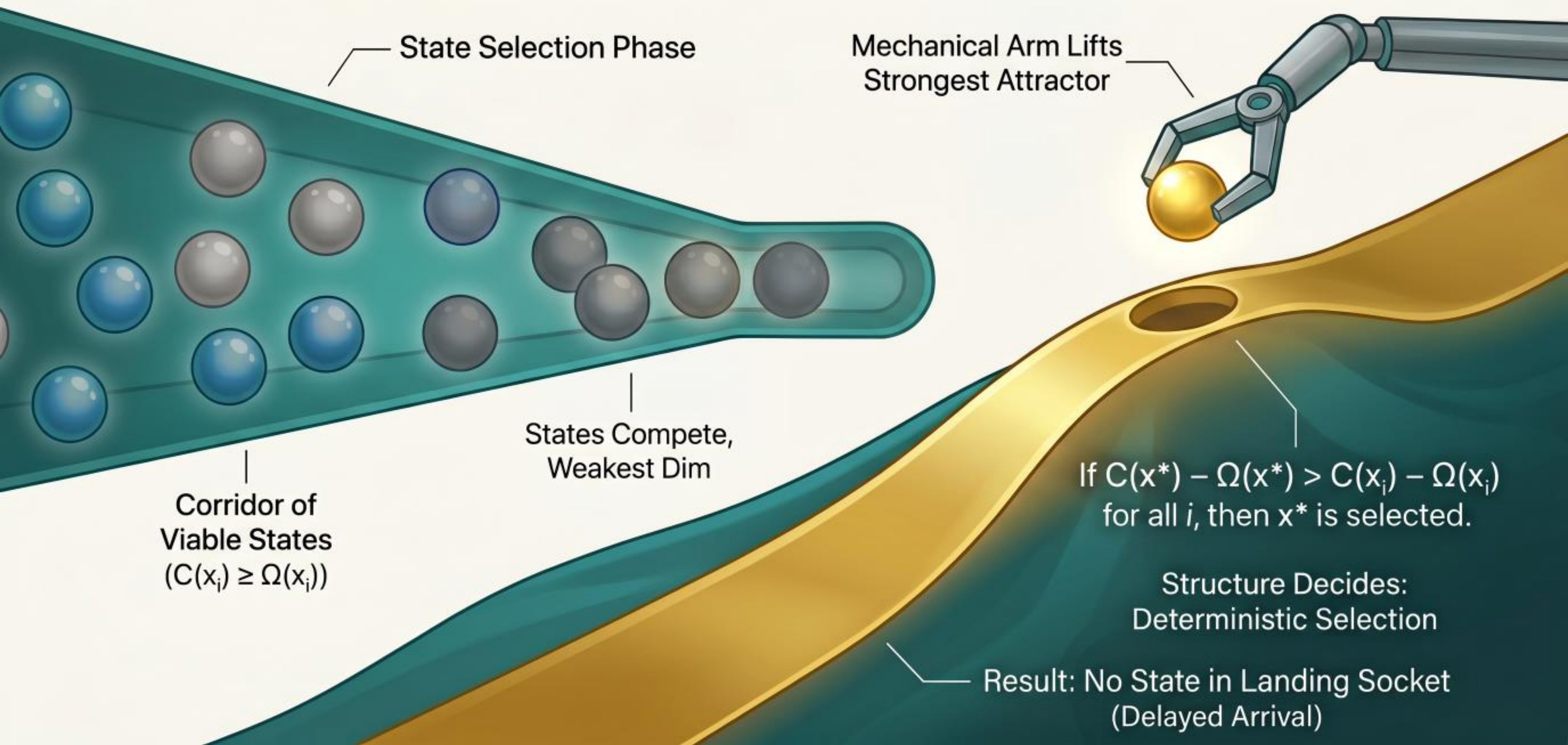
Evolution is  
equilibrium-seeking,  
not random.



# THE CORRIDOR (NOT SUPERPOSITION)



# COLLAPSE WITHOUT PROBABILITY



State Selection Phase

Mechanical Arm Lifts Strongest Attractor

States Compete, Weakest Dim

Corridor of Viable States  
( $C(x_i) \geq \Omega(x_i)$ )

If  $C(x^*) - \Omega(x^*) > C(x_i) - \Omega(x_i)$   
for all  $i$ , then  $x^*$  is selected.

Structure Decides:  
Deterministic Selection

Result: No State in Landing Socket  
(Delayed Arrival)

# INVARIANCE REBORN

$$C(x) - \Omega(x) = C(T(x)) - \Omega(T(x))$$



- **REDEFINING OBJECTIVITY**

Objectivity is not observer consensus; it is substrate-inherent stability.



- **INVARIANT FORMULA**

The relationship  $C(x) - \Omega(x)$  remains stable across manifold regions  $x$  and  $T(x)$ .



- **TRUTH IN SUBSTRATE**

Manifold stability, not shared perceptions, is the fundamental nature of reality.

# ECOSYSTEMS AS TOPOLOGY

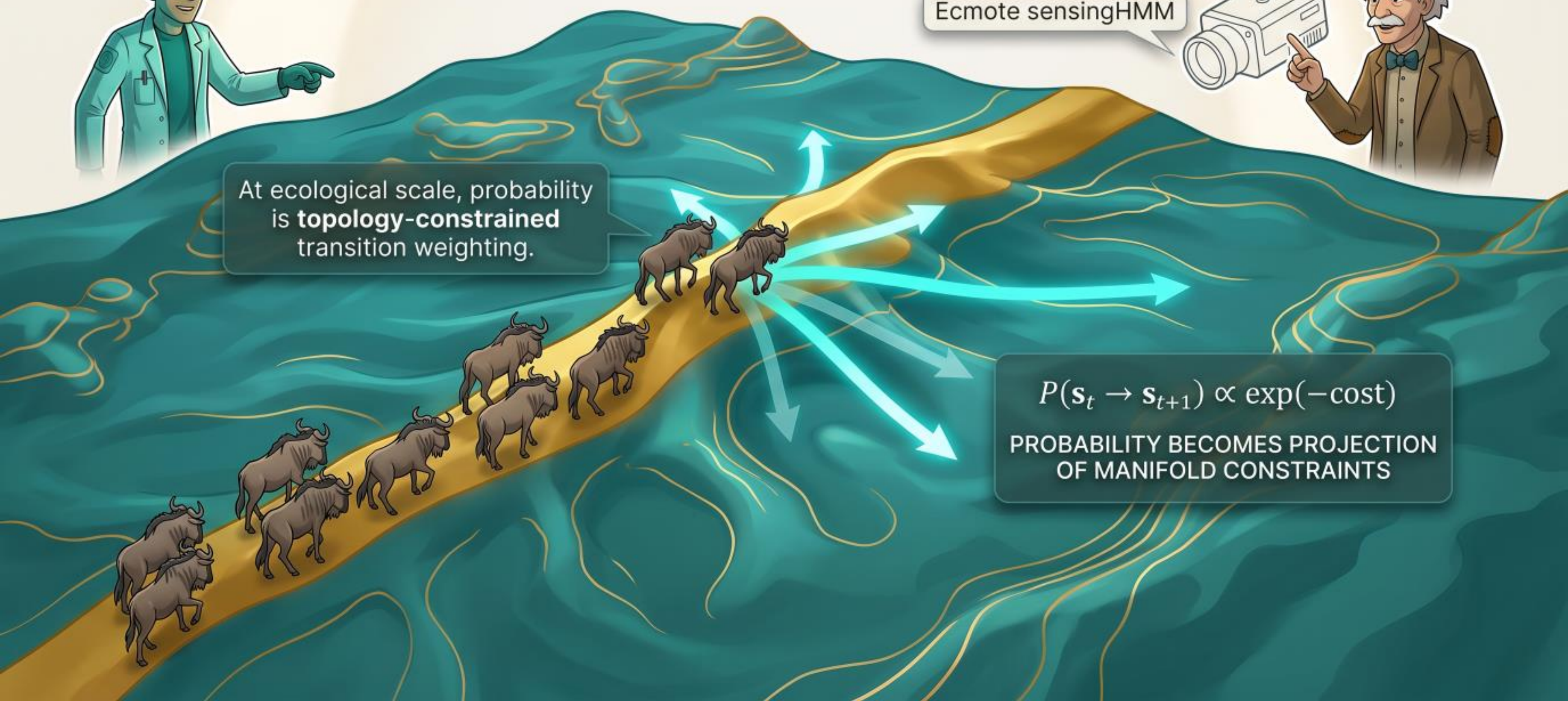


Ecmote sensingHMM



At ecological scale, probability is **topology-constrained** transition weighting.

$P(\mathbf{s}_t \rightarrow \mathbf{s}_{t+1}) \propto \exp(-\text{cost})$   
PROBABILITY BECOMES PROJECTION  
OF MANIFOLD CONSTRAINTS

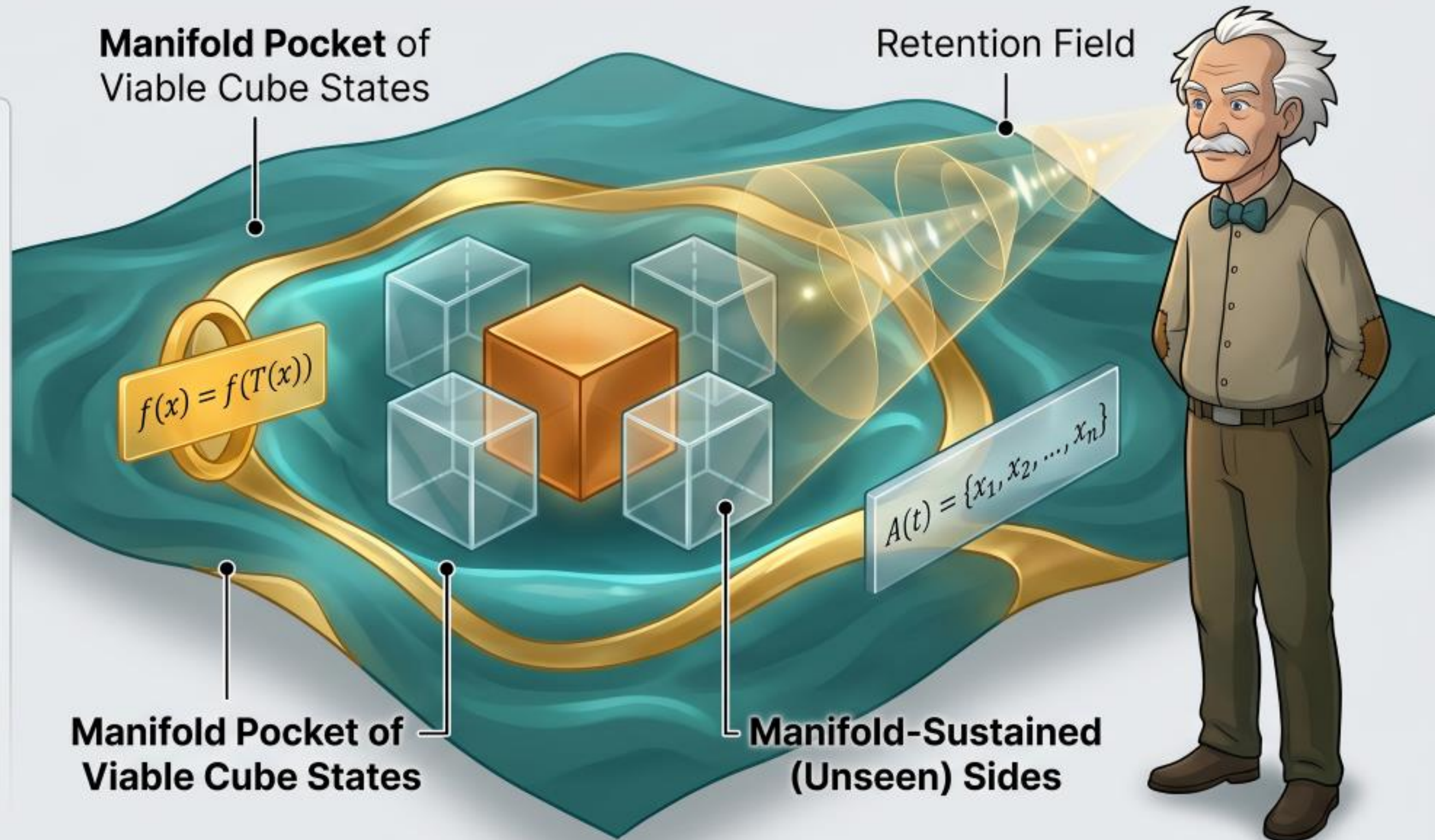


# PHENOMENOLOGY REINTERPRETED

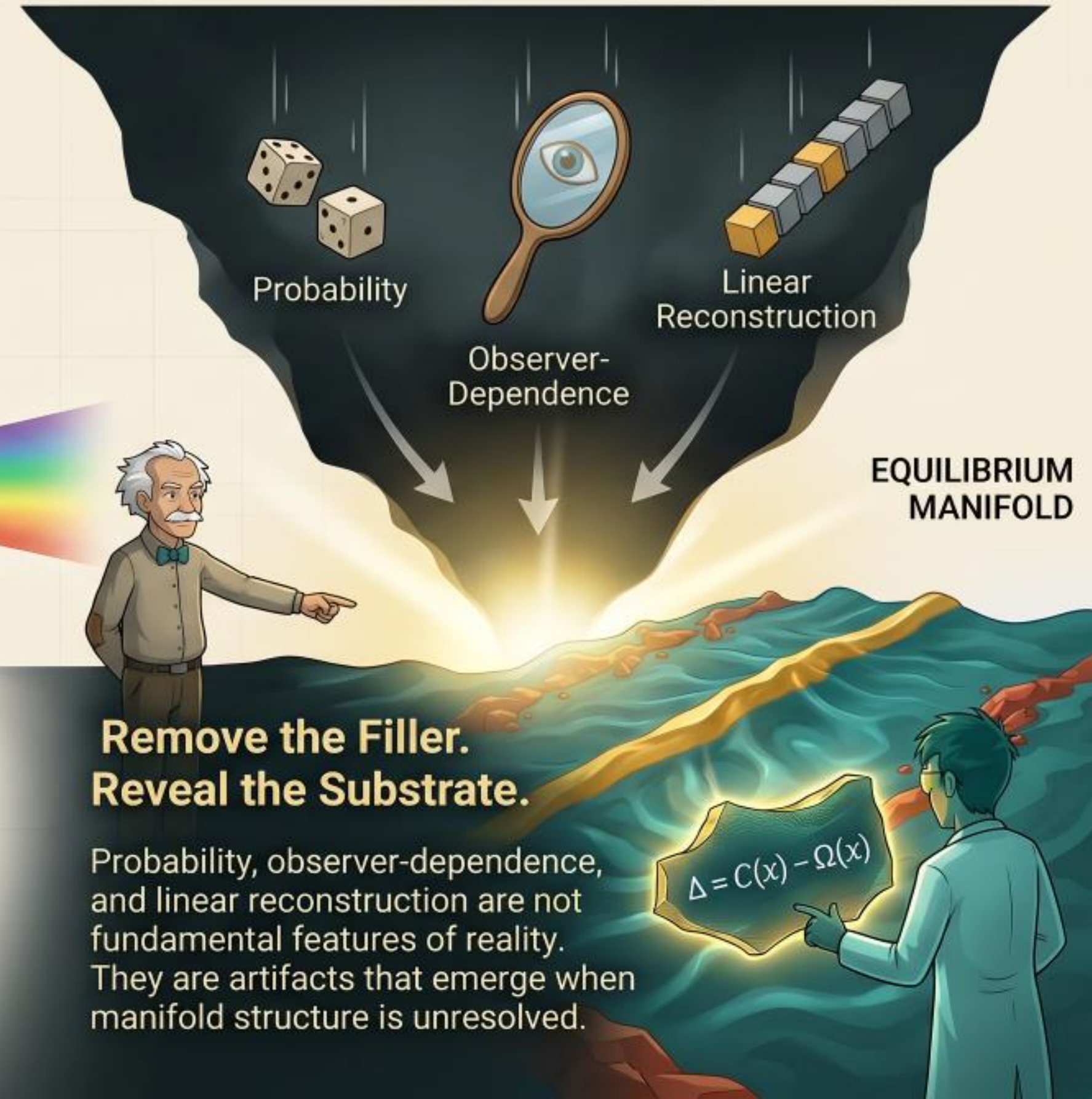
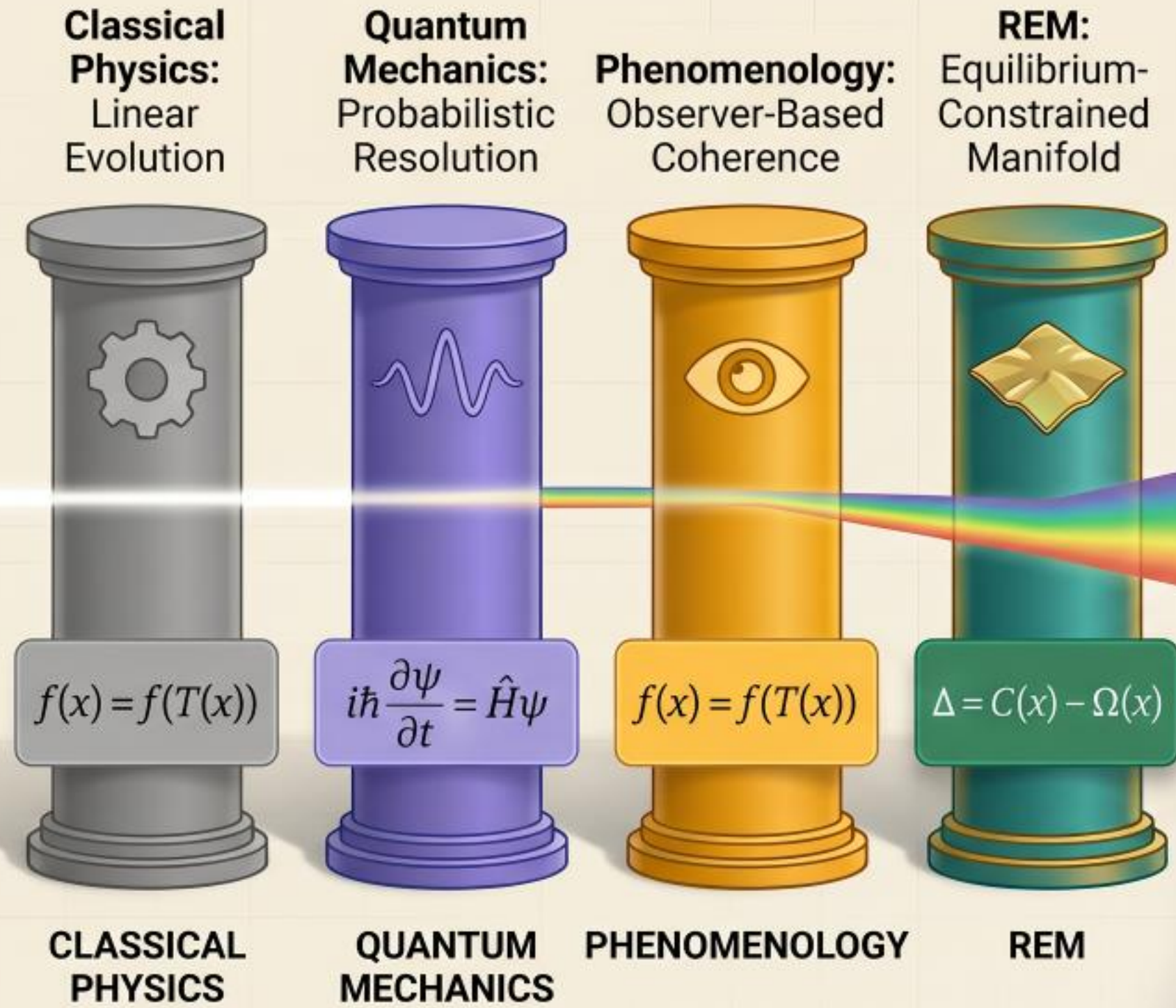
## Perception Reframed

The perceptual field is not constituted by consciousness but **selected from the equilibrium manifold**.

**The unseen sides of a cube** are not imagined by consciousness; they **are manifold-sustained**.



# THE STRUCTURAL MIRROR & WHAT IS NOT FUNDAMENTAL

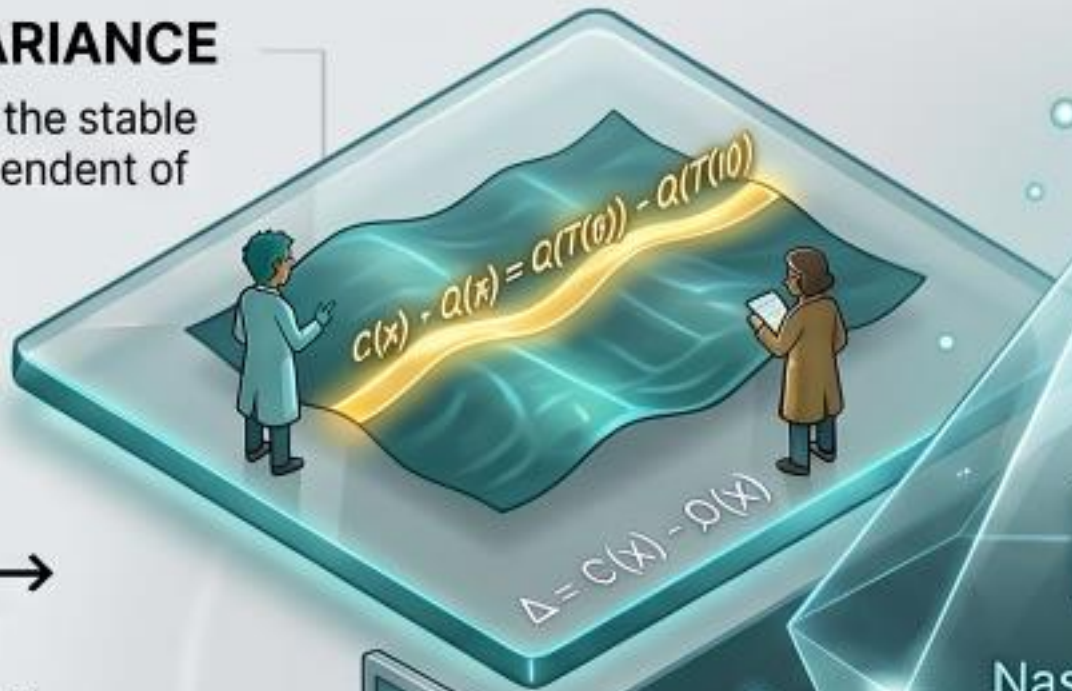


**Frameworks of Reality:** A diagnostic mirror shows only REM achieves stable structural refraction.

# THE FOUR REFRAMES

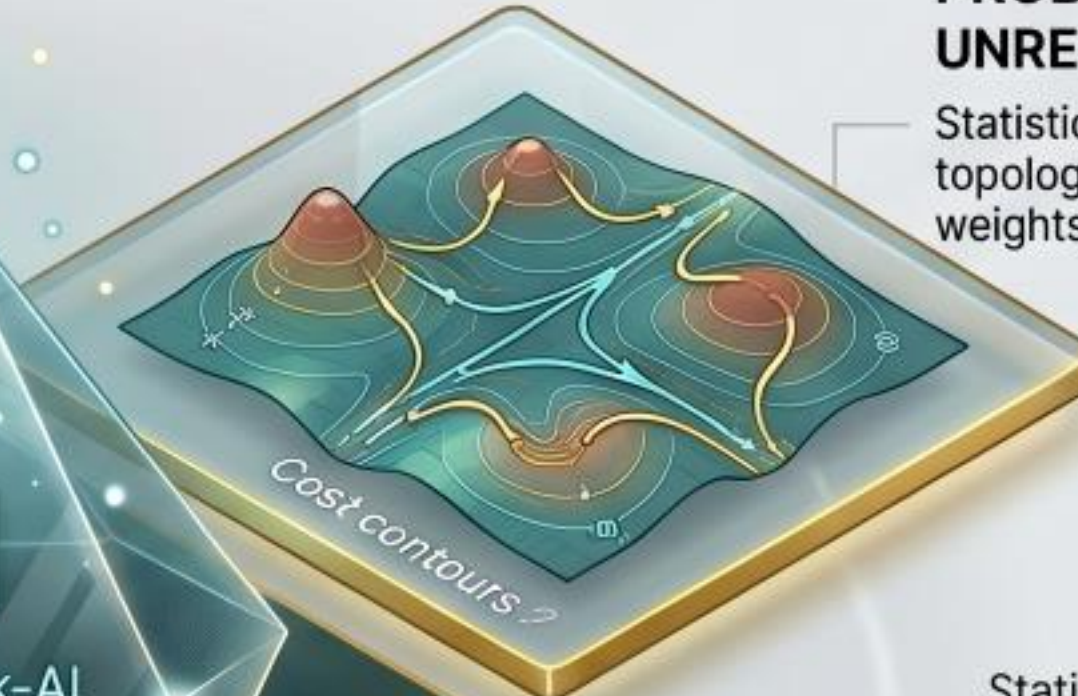
## OBJECTIVITY → EQUILIBRIUM INVARIANCE

Truth is preserved across the stable manifold substrate, independent of observer agreement.



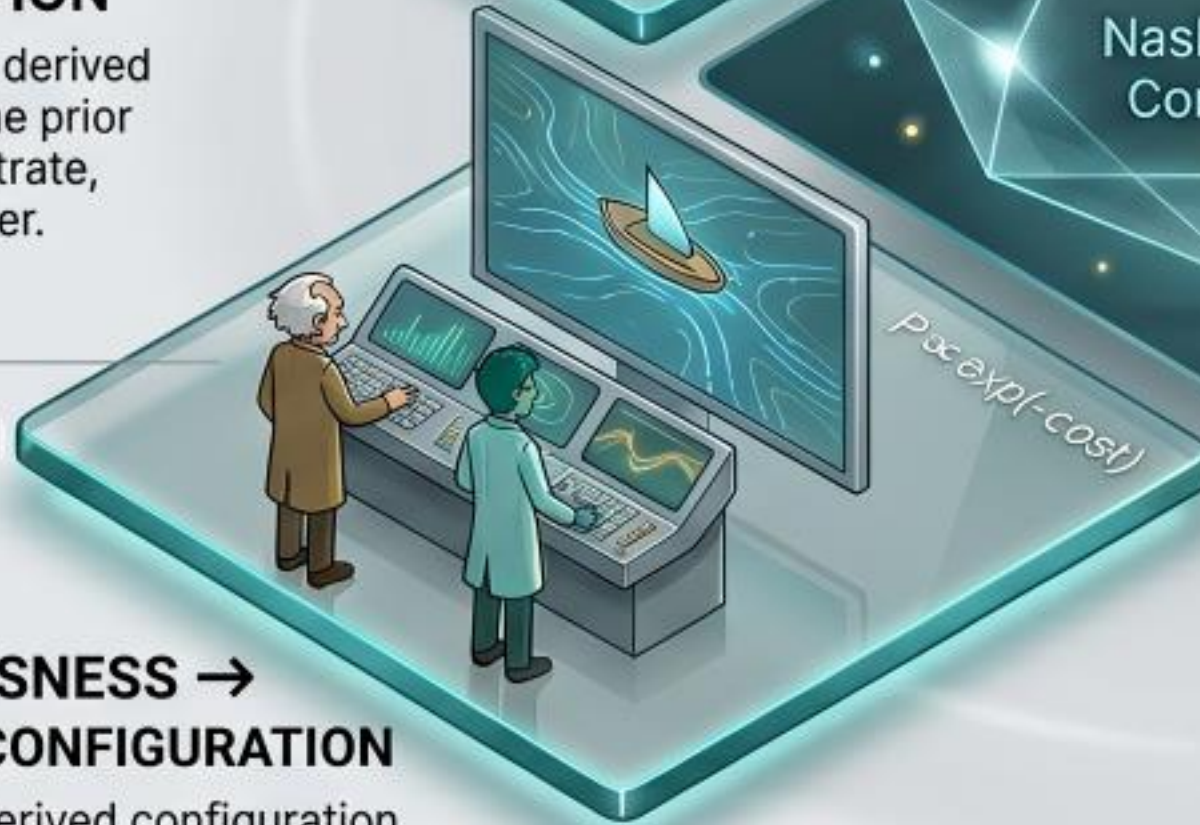
## PROBABILITY → UNRESOLVED TOPOLOGY

Statistical outcomes are topology-constrained transition weights, not inherent randomness.



## CONSCIOUSNESS → CONFIGURATION

Consciousness is a derived configuration of the prior equilibrium substrate, observing order.



Statistical outcomes are topology-constrained topology, not inherent randomness.

## CONSCIOUSNESS → HIGHER-ORDER CONFIGURATION

Consciousness is a derived configuration of the prior equilibrium substrate, order.



## COLLAPSE → EQUILIBRIUM SELECTION

System state is determined by the delayed arrival of the strongest equilibrium attractor.

NashMark-AI  
Core | REM

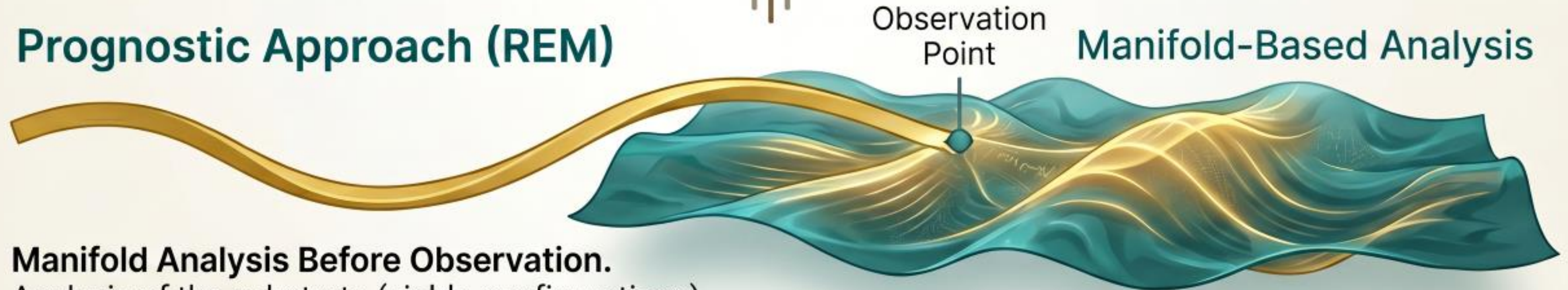
# PROGNOSTIC VS. DIAGNOSTIC



**Reconstruction After Manifestation.** Fragments are glued together **post-hoc**. Observe → Reconstruct.



## Prognostic Approach (REM)



### Manifold Analysis Before Observation.

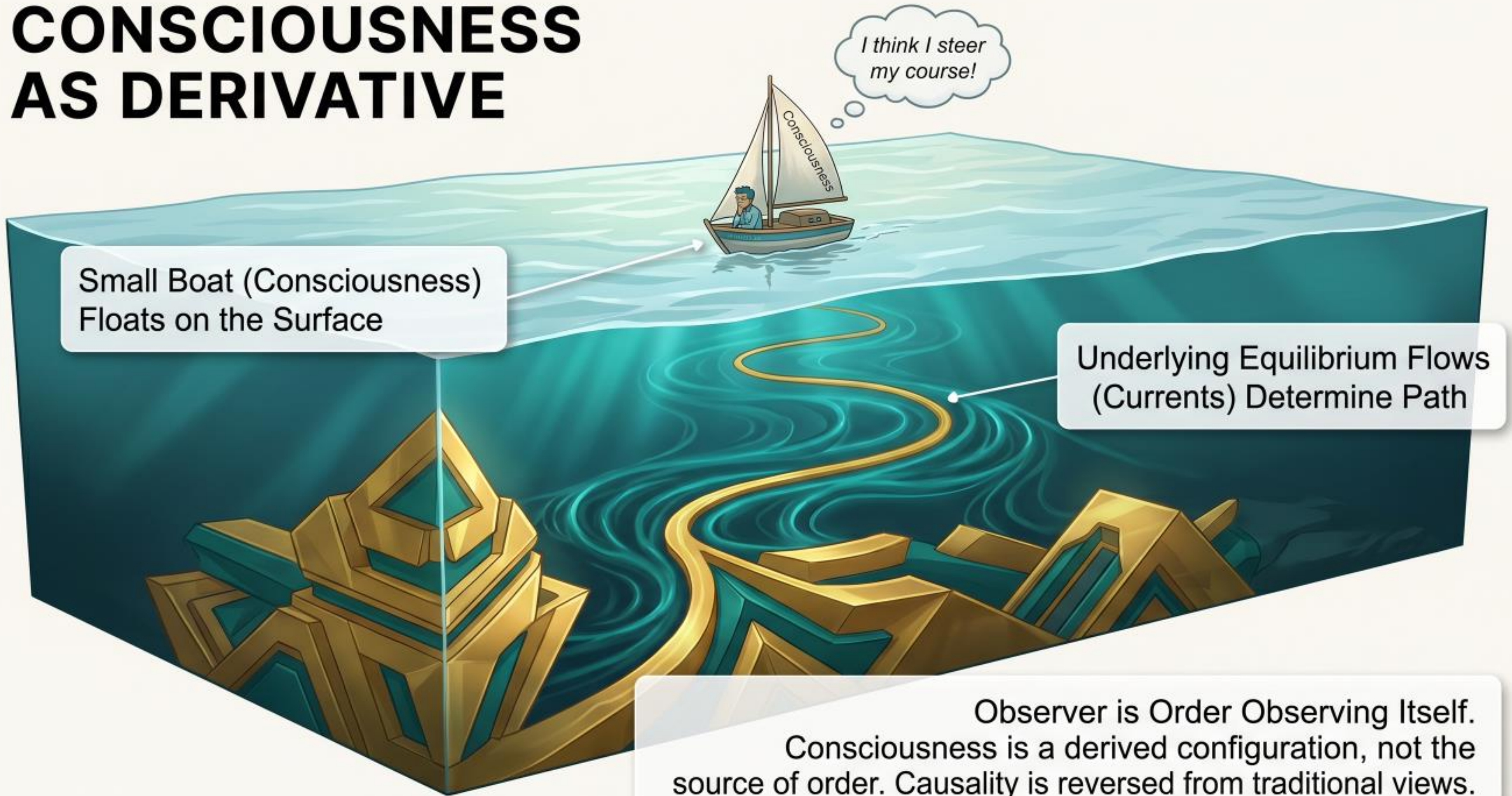
Analysis of the substrate (viable configurations) replaces post-hoc state-guessing.

Sequence: Substrate → Analysis → Select.

### THE FUNDAMENTAL METHODOLOGICAL SHIFT:

From waiting for states to appear to analyzing the substrate that produces them.

# CONSCIOUSNESS AS DERIVATIVE



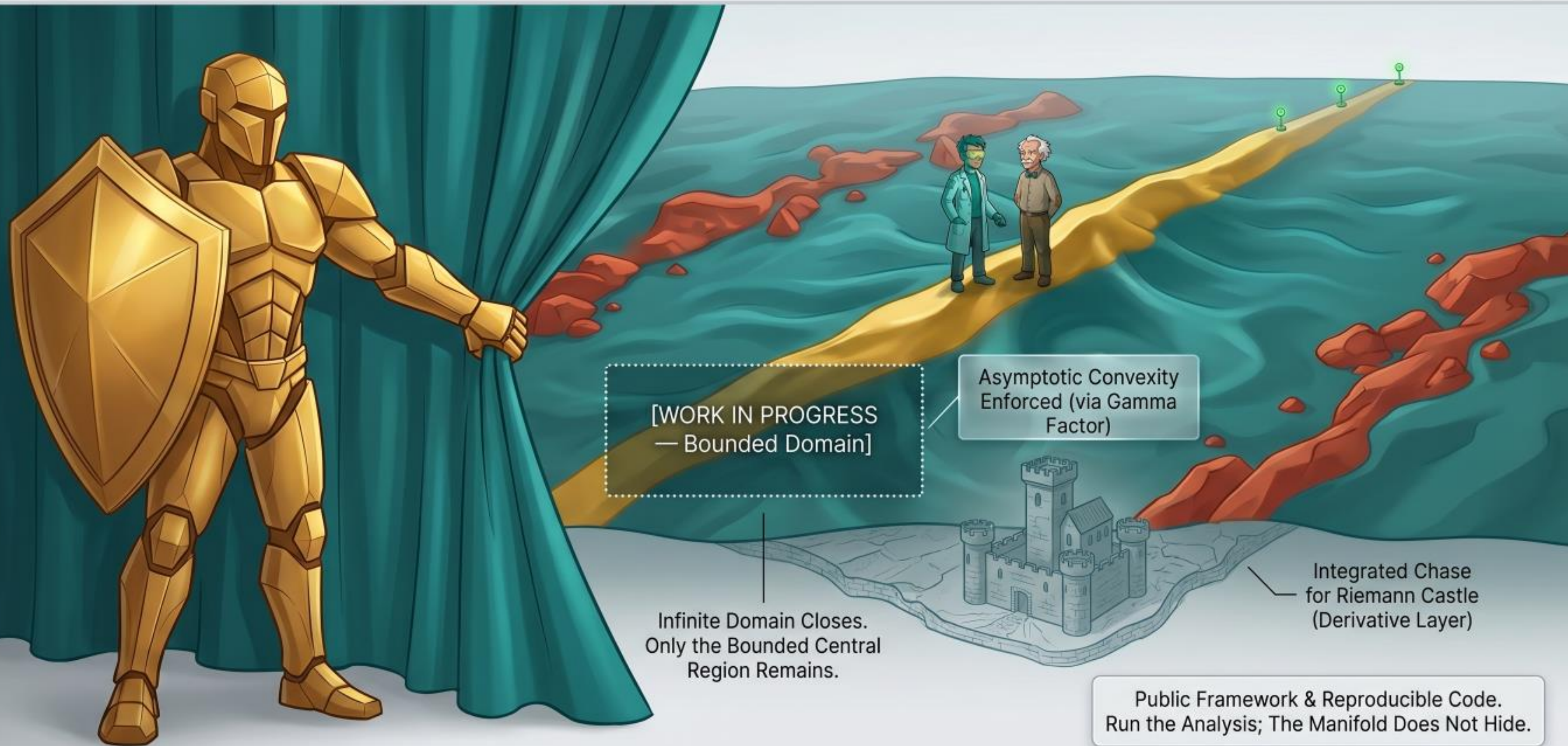
Small Boat (Consciousness)  
Floats on the Surface

*I think I steer  
my course!*

Underlying Equilibrium Flows  
(Currents) Determine Path

Observer is Order Observing Itself.  
Consciousness is a derived configuration, not the  
source of order. Causality is reversed from traditional views.

# THE LYAPUNOV SHIELD & THE NEW EQUILIBRIUM



# THE INVITATION

PUBLIC FRAMEWORK.  
REPRODUCIBLE MATH.

$$f(x) = f(T(x))$$

$$C(x) - \Omega(x) = C(T(x)) - \Omega(T(x))$$

$$\Delta = C - \Omega$$

$$P \propto \exp(-cost)$$

**EQUILIBRIUM  
BEFORE  
OBSERVATION  
— FULL PAPER**

[truthfarian.co.uk/EBO/manifesto](http://truthfarian.co.uk/EBO/manifesto)

FULL DERIVATION & CODE.  
OPENNESS & INVITATION.

VERIFY THE CLAIMS.  
EXPLORE THE MANIFOLD.

